

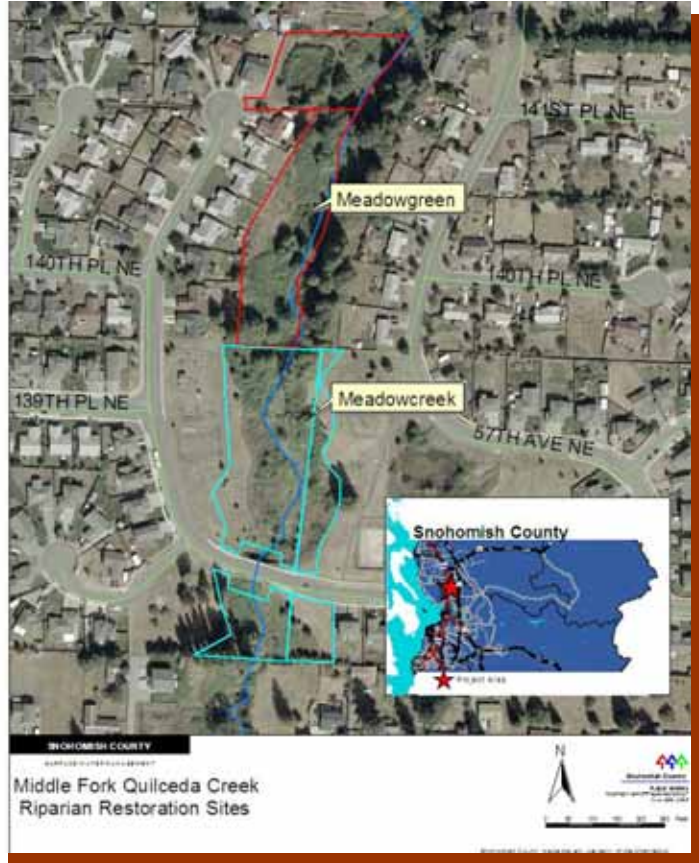
## Middle Fork Quilceda Stream Restoration

This project involved restoration of in-stream and streamside habitat along 1200 feet of the Middle Fork Quilceda Creek within the NGPA's of the Meadow Creek and Meadow Green subdivisions.

Funding for this project was from the Community Salmon Fund and Snohomish County.

The restoration project included:

- Removal of Himalayan blackberry, poison hemlock, deadly nightshade and reed canary grass – all invasive plants.
- Installation of eight distinct and repetitive instream habitat forming wood structures. A total of 45 structures were installed using 240 pieces of large wood to provide diverse instream salmon habitat.
- Planting thousands of native trees and shrub to improve four acres of habitat for salmon and provide wildlife habitat.
- Placing beaver exclusion fencing to protect the plants.



**Blackberries**



**And More Blackberries**



Blackberries on the site were cleared by Brush Wrangler and Snohomish County's Washington Conservation Corp crews. Other invasive weeds were chemically treated under permit.

To protect the soil, mulch was brought to the site to create a road for the heavy equipment.

Large wood was hauled in and wood complexes secured in the stream to provide instream habitat diversity.





WCC crews brought thousands of native plants to the site in preparation for reforesting the 4 acre site.

Over 150 volunteers participated in the site planting on three planting days. 106 girl scouts planted in October 2006, 20 staff from Barclay North planted in November, and 27 boy scouts planted in March 2007.

Washington State Corrections crews and WCC crews planted as well.



Salmon in  
Middle Fork  
Quilceda  
Creek:  
Chinook,  
coho, chum



*The best time  
to plant a tree  
was twenty  
years ago.  
The second  
best time is  
now.*

Anonymous