

Appendix A.5
Surface Water Management
Construction Projects

APPENDIX A.5 - Surface Water Management Construction Projects

The following figures show locations of projects from the Surface Water Management Annual Construction Programs for the years 2003 through 2006 (Figures A.5-1 through A.5-4), and the Detailed Improvement Program for 2007 to 2012 (Figure A.5-5). The Detailed Improvement Program are future projects, ranging from those which are in preliminary design, to those which are in planning or study phases.

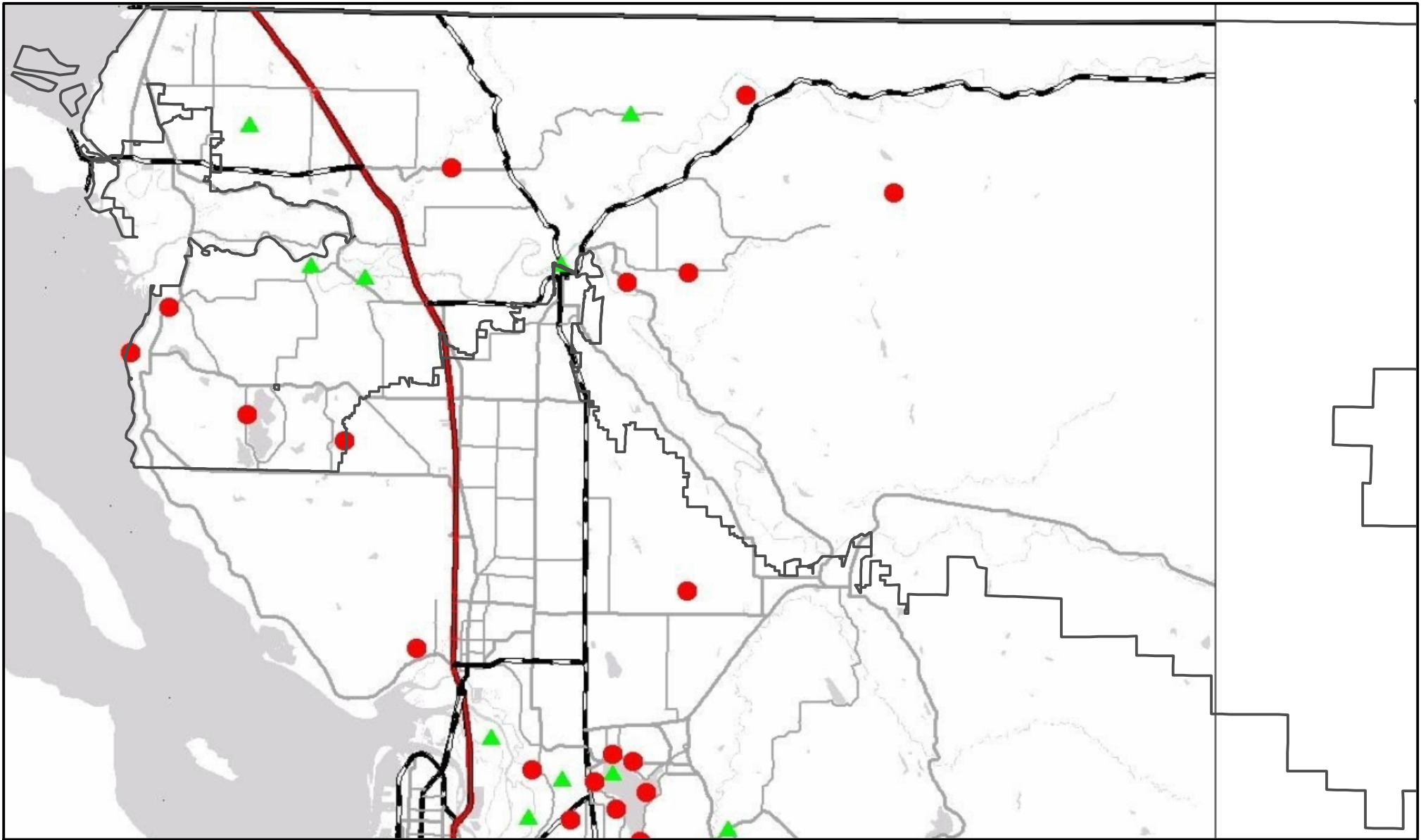
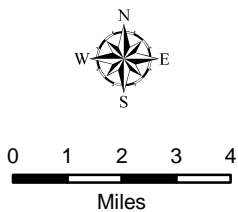


Figure A.5-1 2003 Annual Construction Program

- Drainage Infrastructure Improvements
- ▲ Habitat/Fish Restoration
- CWD Boundary
- Freeway
- Highway
- Large Roads
- Connectors



PUBLIC WORKS
 SURFACE WATER MANAGEMENT
 (425) 388-3464

Snohomish County disclaims any warranty of merchantability or warranty of fitness of this map for any particular purpose, either express or implied. No representation or warranty is made concerning the accuracy, currency, completeness or quality of data depicted on this map. Any user of this map assumes all responsibility for use thereof, and further agrees to hold Snohomish County harmless from and against any damage, loss, or liability arising from any use of this map.

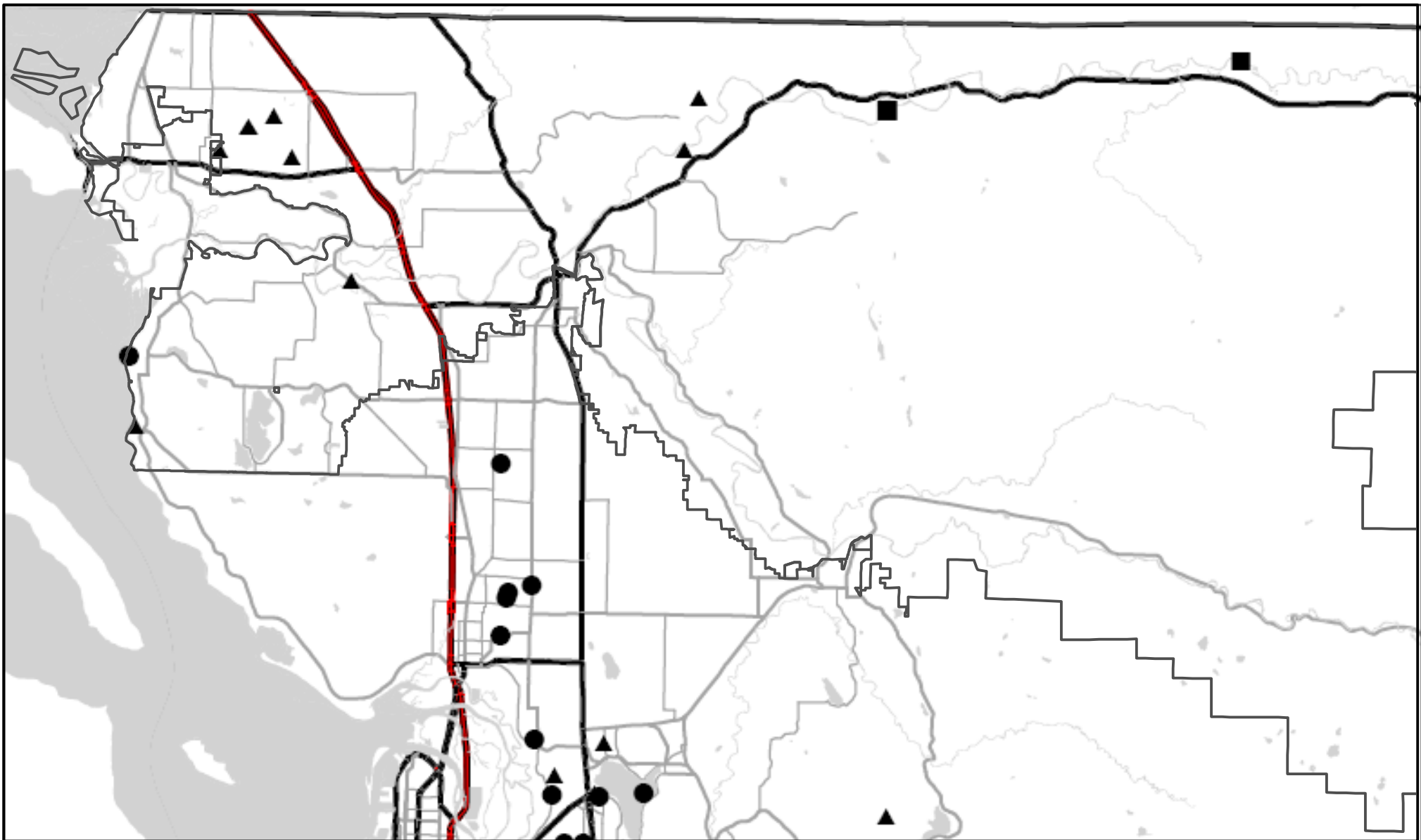
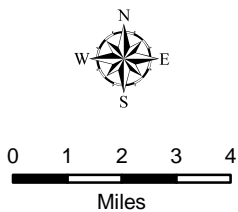


Figure A.5-2 2004 Annual Construction Program

Legend

- Drainage Infrastructure
- ▲ Habitat/Fish Restoration
- River Management/Levees
- CWD Boundary
- Freeway
- Highway
- Large Roads
- Connectors
- Ramps



PUBLIC WORKS
 SURFACE WATER MANAGEMENT
 (425) 388-3464

Snohomish County disclaims any warranty of merchantability or warranty of fitness of this map for any particular purpose, either express or implied. No representation or warranty is made concerning the accuracy, currency, completeness or quality of data depicted on this map. Any user of this map assumes all responsibility for use thereof, and further agrees to hold Snohomish County harmless from and against any damage, loss, or liability arising from any use of this map.

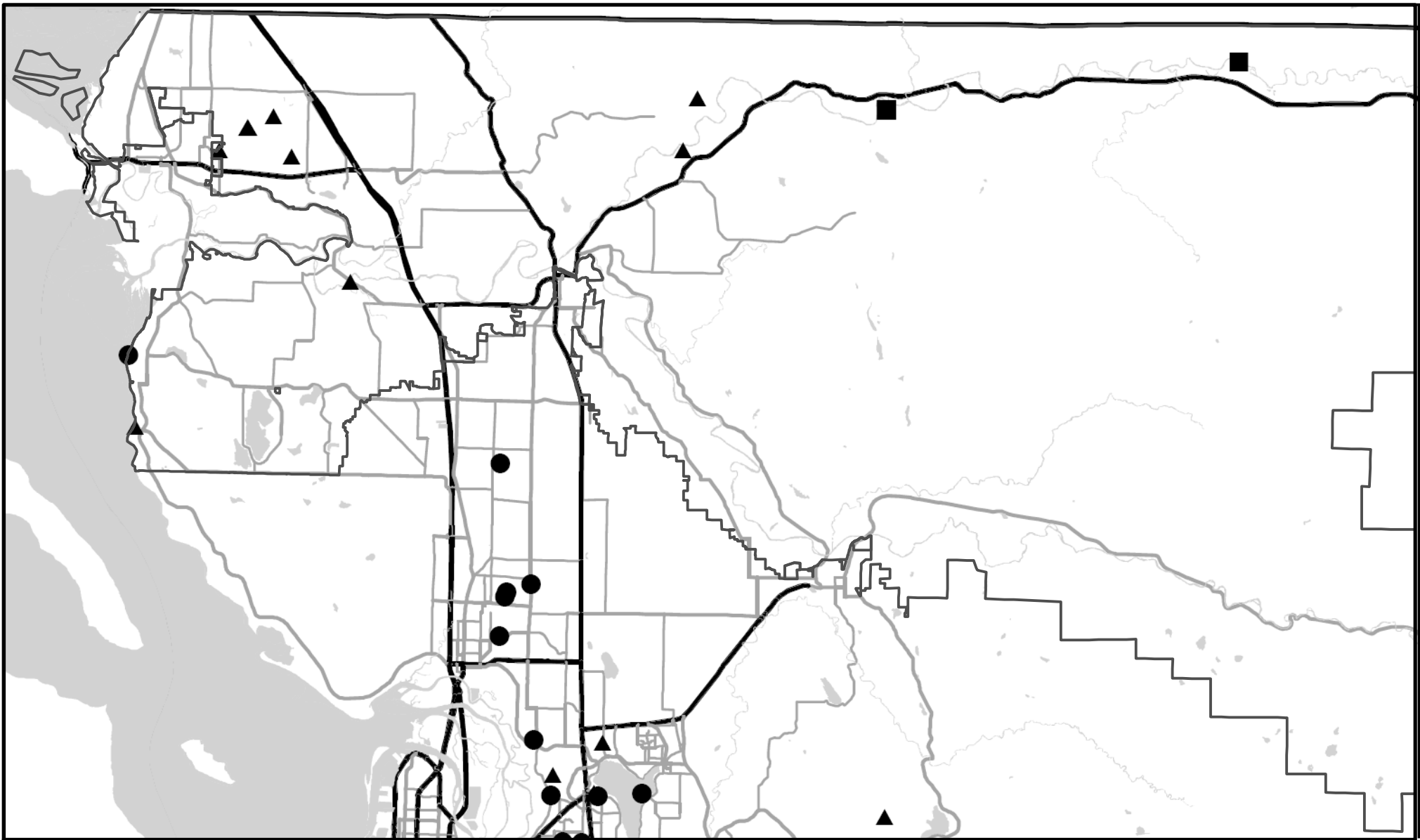
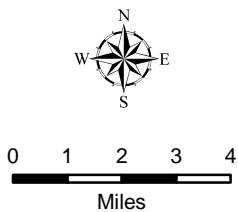


Figure A.5-3 2005 Annual Construction Program

Legend

- Drainage Infrastructure
- ▲ Habitat/Fish Restoration
- River Management/Levees
- CWD Boundary
- Freeway
- Highway
- Large Roads
- Connectors
- Ramps



PUBLIC WORKS
 SURFACE WATER MANAGEMENT
 (425) 388-3464

Snohomish County disclaims any warranty of merchantability or warranty of fitness of this map for any particular purpose, either express or implied. No representation or warranty is made concerning the accuracy, currency, completeness or quality of data depicted on this map. Any user of this map assumes all responsibility for use thereof, and further agrees to hold Snohomish County harmless from and against any damage, loss, or liability arising from any use of this map.

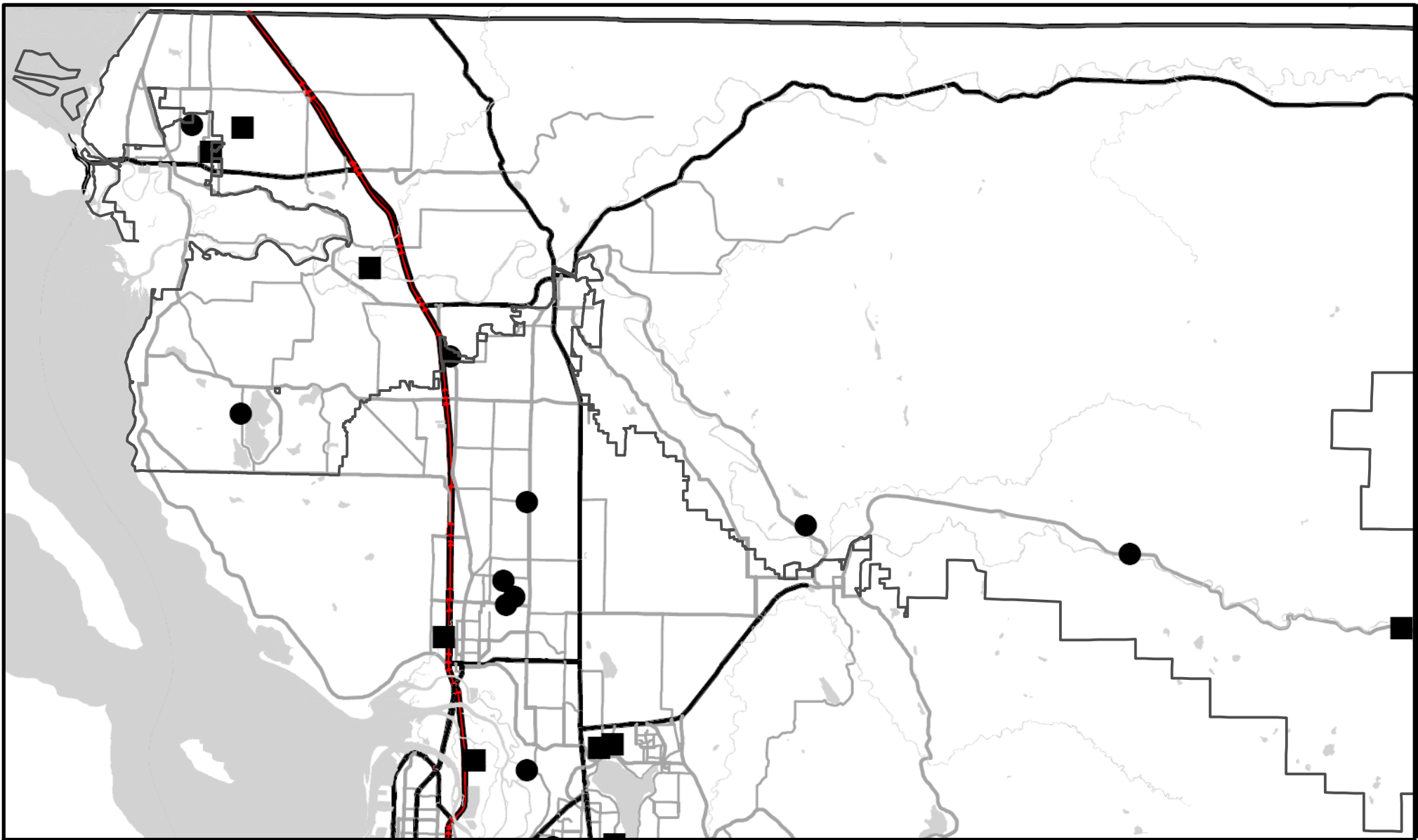
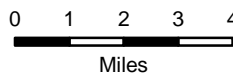


Figure A.5-4 2006 Annual Construction Program

Legend

- Drainage Infrastructure
- Habitat/Water Quality
- CWD Boundary
- Freeway
- Highway
- Large Roads
- Connectors
- Ramps



Snohomish County

PUBLIC WORKS
SURFACE WATER MANAGEMENT
(425) 388-3464

Snohomish County disclaims any warranty of merchantability or warranty of fitness of this map for any particular purpose, either express or implied. No representation or warranty is made concerning the accuracy, currency, completeness or quality of data depicted on this map. Any user of this map assumes all responsibility for use thereof, and further agrees to hold Snohomish County harmless from and against any damage, loss, or liability arising from any use of this map.

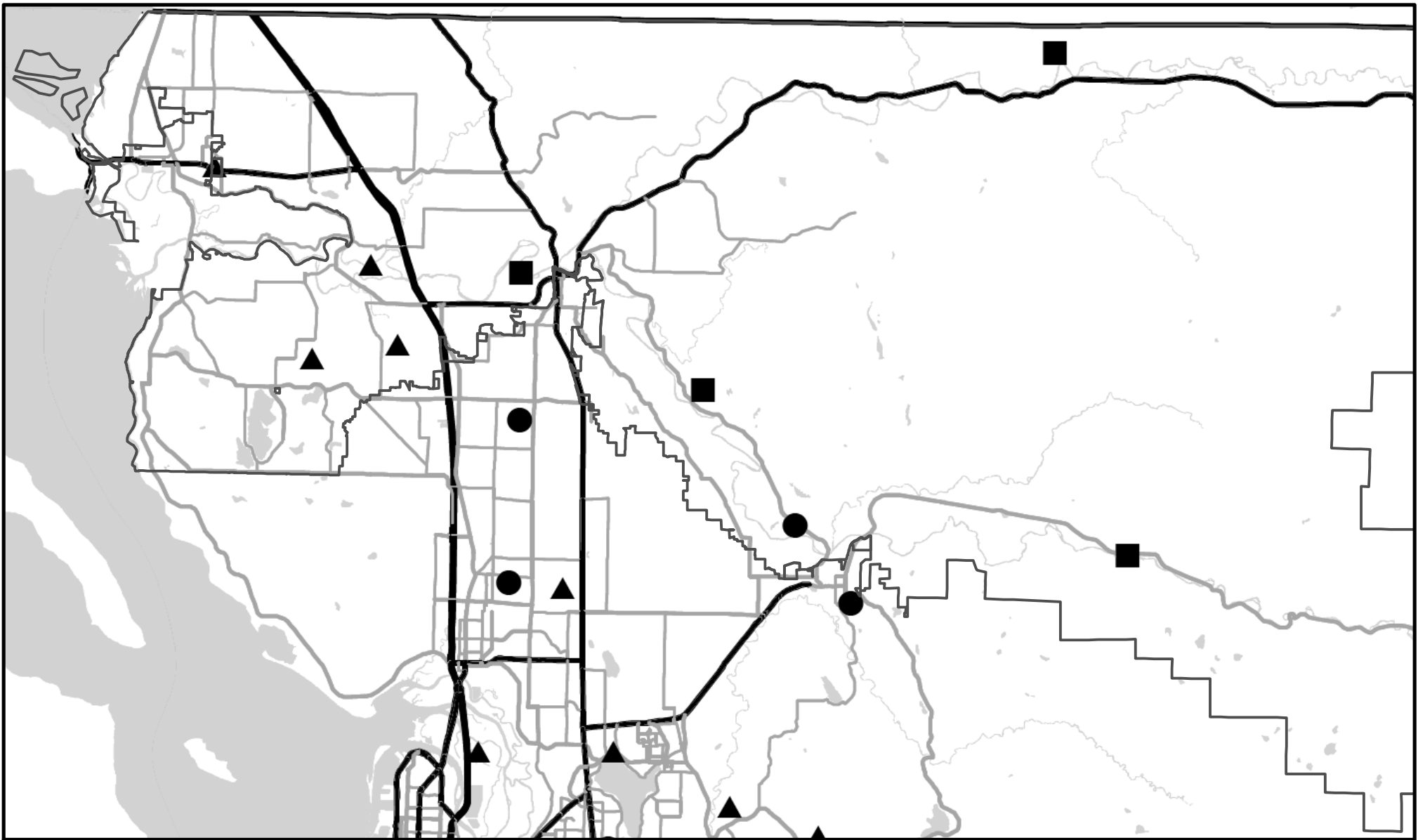


Figure A.5-5 2007-2012 Detailed Improvement Program

- | | | | |
|---|--------------------------------------|-------|-------------|
| ● | Drainage Infrastructure Improvements | — | Freeway |
| ▲ | Habitat/Fish Restoration | — | Highway |
| ■ | River Management/River Levees | — | Large Roads |
| □ | CWD Boundary | - - - | Connectors |

