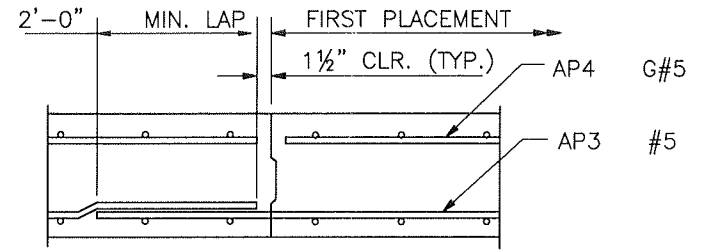


PLAN

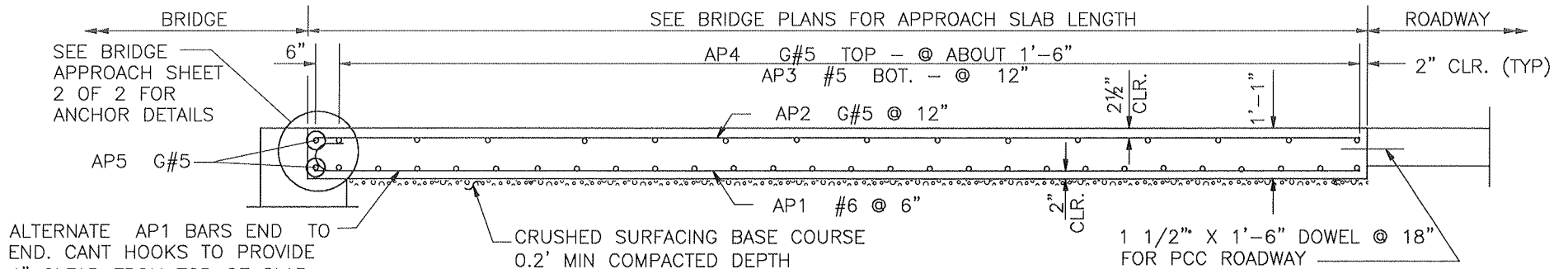


TYPICAL LONGITUDINAL CONSTRUCTION JOINT

EDGE FIRST POUR ONLY WITH 1/2" RADIUS.
N.T.S.

NOTE:

1. ALL EDGES OF APPROACH SLAB SHALL HAVE 1/2" RADIUS.
2. G=GALVANIZED REINFORCING STEEL



LONGITUDINAL SECTION

N.T.S.

S:\ITES\COMMON\EDDS\EDDS DRAWINGS\Ch6\6030.dwg



SNOHOMISH COUNTY PUBLIC WORKS

6-030A

TYPICAL BRIDGE APPROACH SLAB

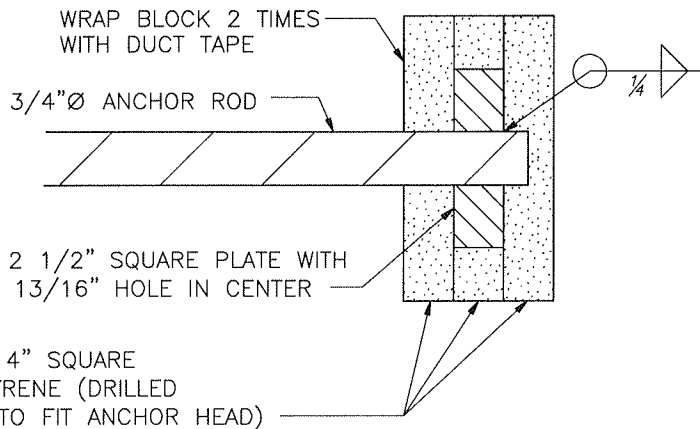
APPROVED BY:

Steve E. Norman

COUNTY ROAD ENGINEER

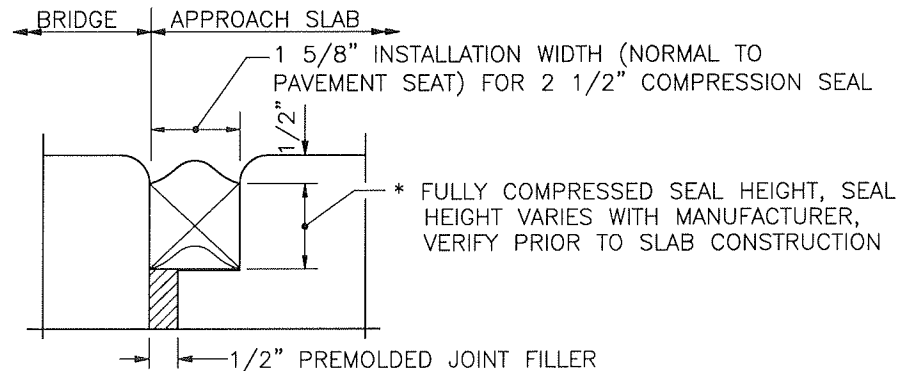
2-10-03

DATE



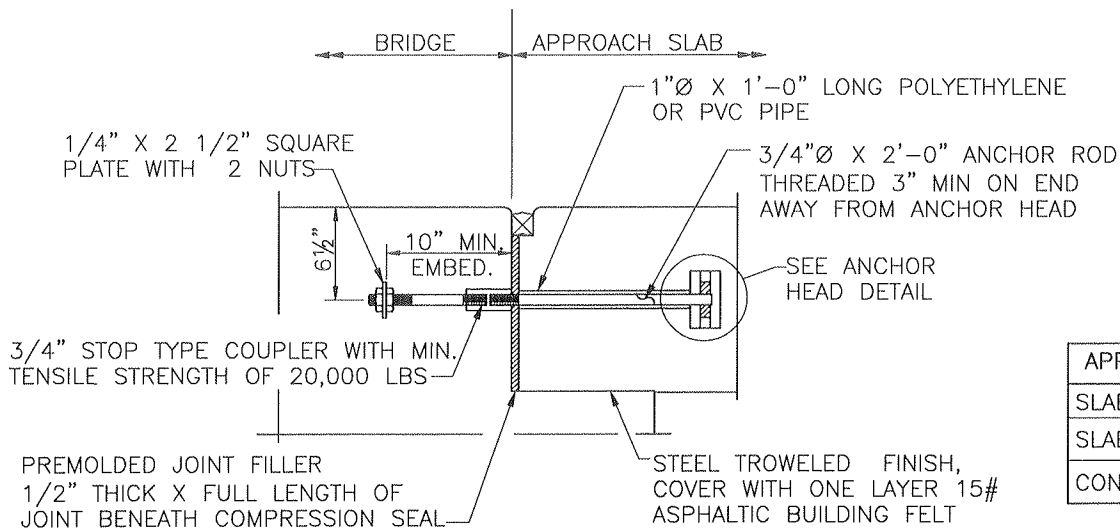
ANCHOR HEAD DETAIL

N.T.S.



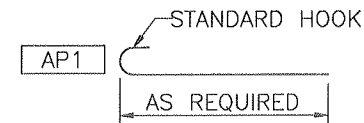
COMPRESSION SEAL DETAIL

N.T.S.



APPROACH ANCHOR DETAIL

SEMI-INTEGRAL TYPE ONLY
N.T.S.



ALL REINFORCING BARS SHOWN ON THIS SHEET SHALL BE AASHTO M-31 UNLESS NOTED OTHERWISE.

G=GALVANIZED REINFORCING STEEL

BENDING DETAIL FOR QUANTITIES

N.T.S.

APPROXIMATE QUANTITIES	AMOUNT	UNIT
SLAB GALVANIZED REINFORCING BARS (TOP MAT)	15.645	LBS/SY
SLAB REINFORCING BARS (BOTTOM MAT)	28.161	LBS/SY
CONCRETE	0.361	CY/SY

NOTE:

PAINT METAL COMPONENTS OF APPROACH ANCHOR WITH ONE COAT OF INORGANIC ZINC OR FORMULA A-11-99 PAINT IN ACCORDANCE WITH STD. SPEC. 9-08.2.

S:\TES\COMMON\EDDS\EDDS DRAWINGS\Ch6\6030.dwg



SNOHOMISH COUNTY PUBLIC WORKS

6-030B

TYPICAL BRIDGE APPROACH SLAB

APPROVED BY:

Stewart Morrison

COUNTY ROAD ENGINEER

2-10-03

DATE