

NOTES:

1. GUARDRAIL TAPERS 9:1 MIN.
2. GUARDRAIL NOT REQUIRED WHEN POSTED SPEED IS LESS THAN 35 M.P.H.
3. OPTIONS A AND B ILLUSTRATE PLANTER STRIP END TREATMENT.
4. REFER TO WSDOT STANDARD PLANS AND SPECIFICATIONS FOR ADDITIONAL DETAILS.

SEE TEXT SECTION 6-03.

TYPICAL PLAN VIEW

N.T.S.

S:\ITES\COMMON\EDDS\EDDS DRAWINGS\Ch6\6010.dwg



SNOHOMISH COUNTY PUBLIC WORKS

6-010

URBAN STANDARD - TRANSITION AT BRIDGE

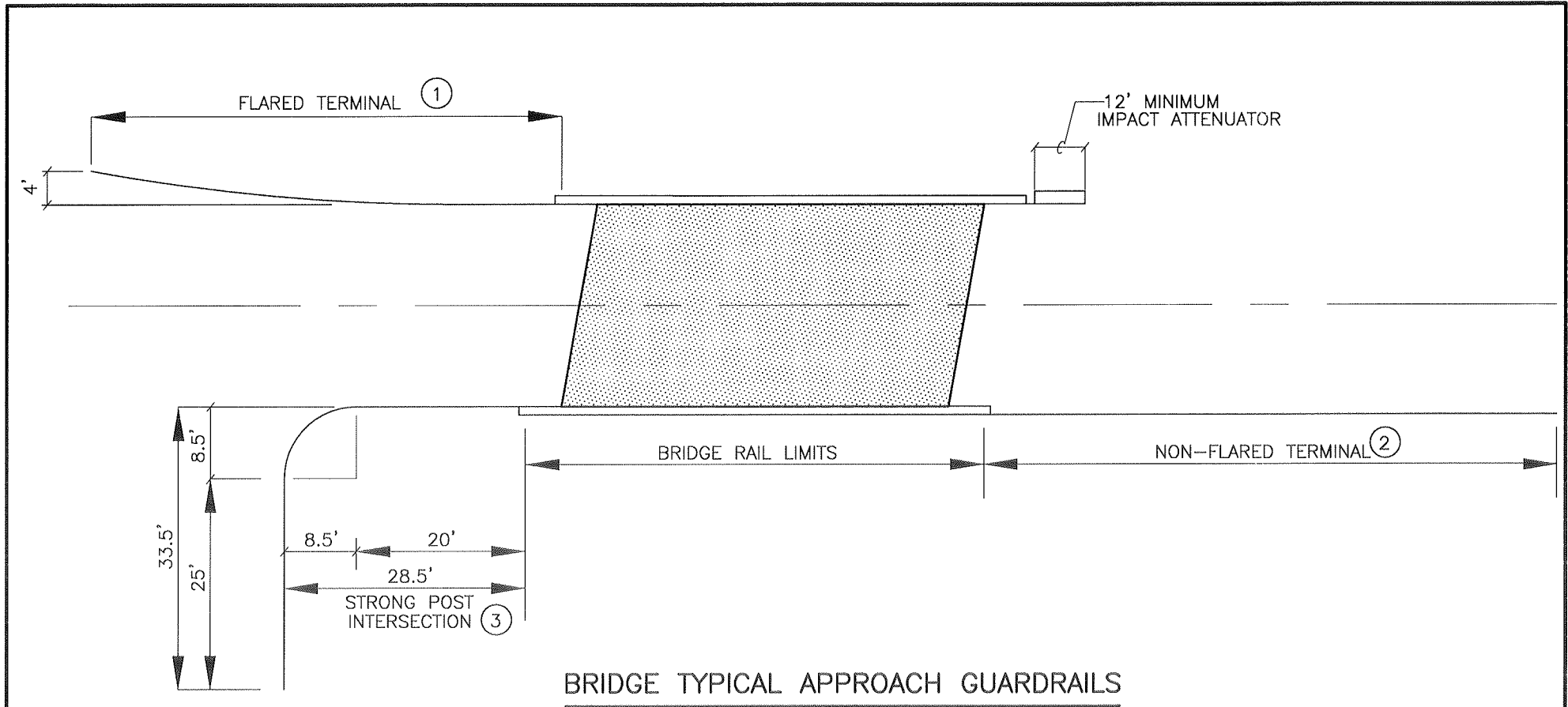
APPROVED BY:

Steve E. Morrison

COUNTY ROAD ENGINEER

2-11-03

DATE



BRIDGE TYPICAL APPROACH GUARDRAILS

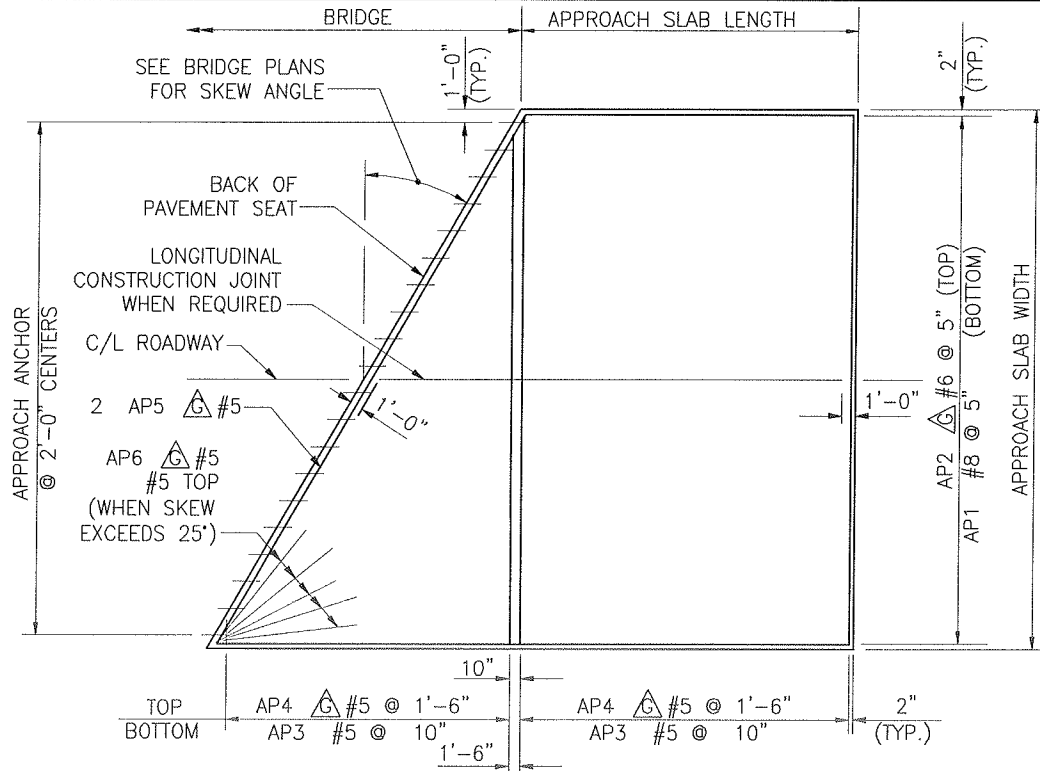
N.T.S.

NOTES:

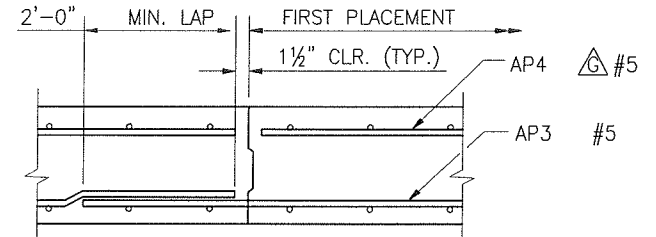
- 1. FLARED TERMINAL PREFERRED. REFER TO WSDOT STANDARD PLANS C-3, C-4B, AND C-5. LENGTH = 50 FT. MIN. FOR POSTED SPEED ≤ 40 MPH. LENGTH = 60 FT. MIN. FOR POSTED SPEED ≥ 45 MPH.
 - 2. REFER TO WSDOT STANDARD PLANS C-3, C-4E, AND C-5. LENGTH = 50 FT. MIN. FOR POSTED SPEED ≤ 40 MPH. LENGTH = 70 FT. MIN. FOR POSTED SPEED ≥ 45 MPH.
 - 3. REFER TO WSDOT STANDARD PLAN C-2F.
- SEE TEXT SECTION 6-03.

S:\ITES\COMMON\EDDS\EDDS DRAWINGS\Ch6\6020.dwg

	SNOHOMISH COUNTY PUBLIC WORKS		APPROVED BY:	
	6-020	RURAL STANDARD - TRANSITION AT BRIDGE		
			COUNTY ROAD ENGINEER	2-10-03 DATE



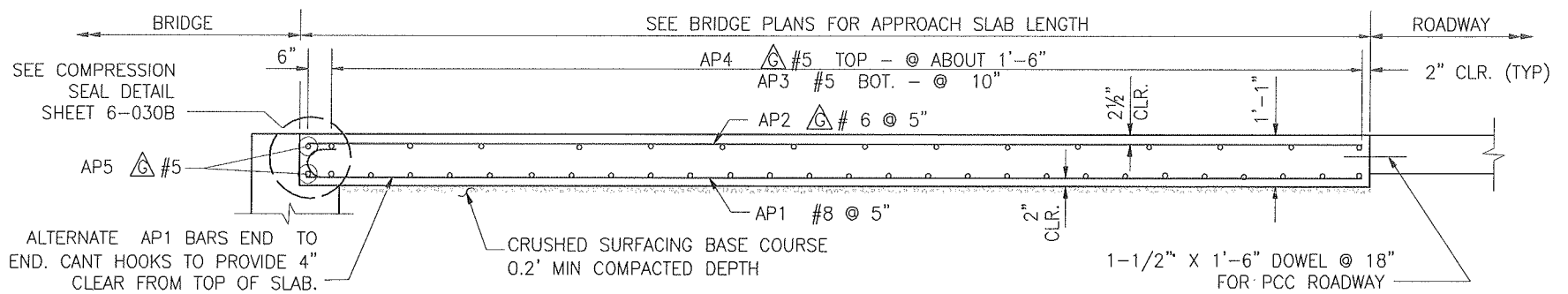
PLAN



EDGE FIRST POUR ONLY WITH 1/2" RADIUS.
TYPICAL LONGITUDINAL CONSTRUCTION JOINT
 N.T.S.

NOTE:

1. ALL EDGES OF APPROACH SLAB SHALL HAVE 1/2" RADIUS.
2. \triangle = GALVANIZED REINFORCING STEEL



LONGITUDINAL SECTION

N.T.S.



SNOHOMISH COUNTY PUBLIC WORKS

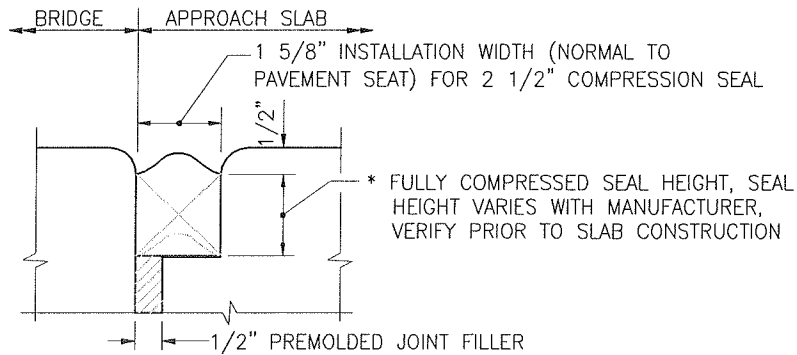
6-030A

TYPICAL BRIDGE APPROACH SLAB

APPROVED BY:

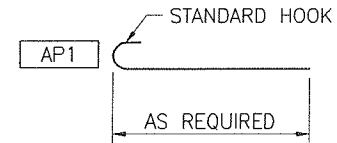
COUNTY ROAD ENGINEER

9/15/09
 DATE



COMPRESSION SEAL DETAIL

N.T.S.



ALL REINFORCING BARS SHALL BE AASHTO M-31 UNLESS NOTED OTHERWISE.

 = GALVANIZED REINFORCING STEEL

BENDING DETAIL FOR QUANTITIES

N.T.S.

APPROXIMATE QUANTITIES	AMOUNT	UNIT
SLAB GALVANIZED REINFORCING BARS (TOP MAT)	15.645	LBS/SY
SLAB REINFORCING BARS (BOTTOM MAT)	28.161	LBS/SY
CONCRETE	0.361	CY/SY

NOTE:

PAINT METAL COMPONENTS OF APPROACH ANCHOR WITH ONE COAT OF INORGANIC ZINC OR FORMULA A-11-99 PAINT IN ACCORDANCE WITH STD. SPEC. 9-08.2.



SNOHOMISH COUNTY PUBLIC WORKS

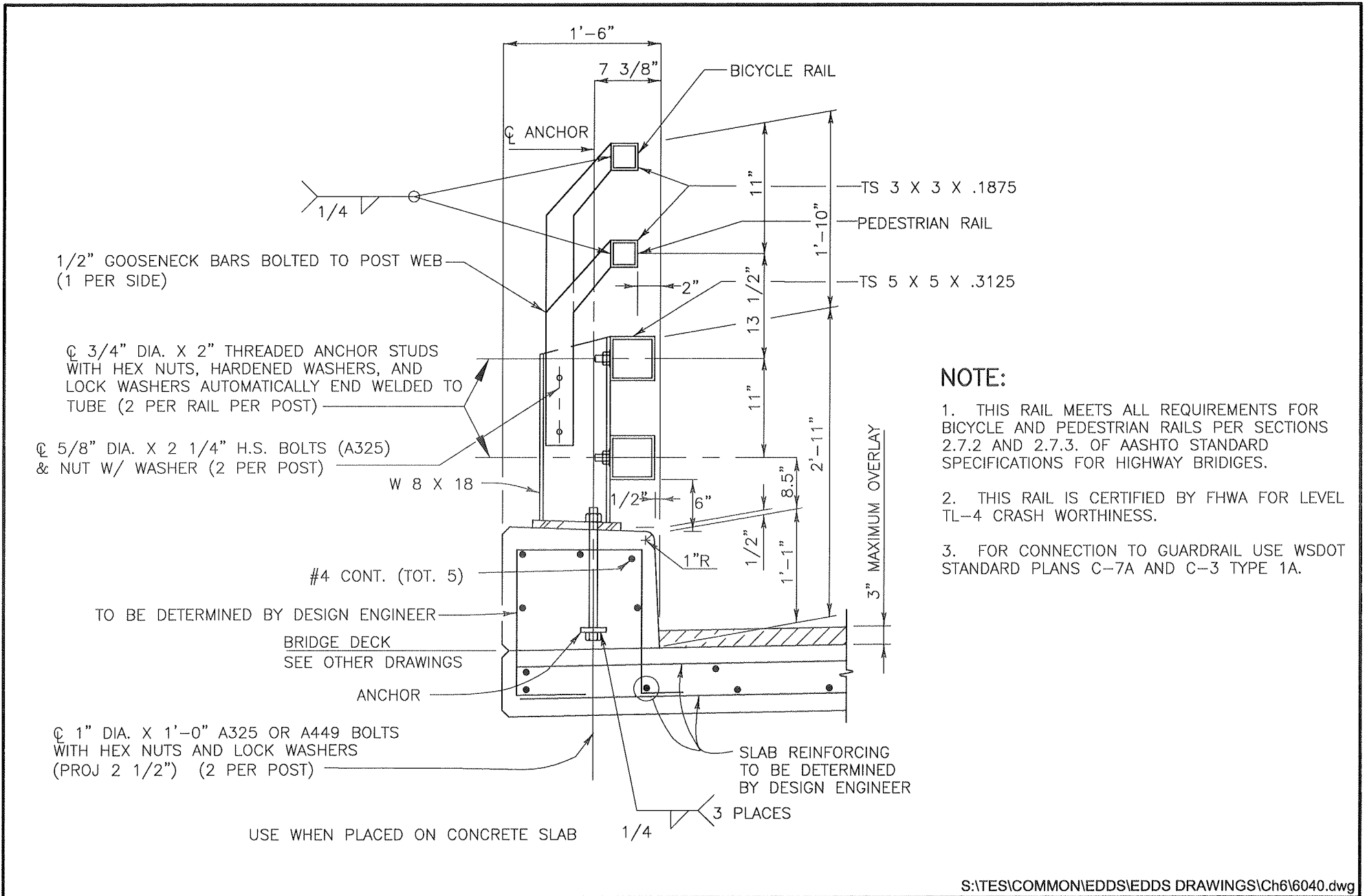
6-030B

TYPICAL BRIDGE APPROACH SLAB

APPROVED BY:


COUNTY ROAD ENGINEER

9/15/09
DATE



SNOHOMISH COUNTY PUBLIC WORKS

6-040

STANDARD BRIDGE RAIL

APPROVED BY:

Steward E. Morrison

COUNTY ROAD ENGINEER

2-10-03

DATE