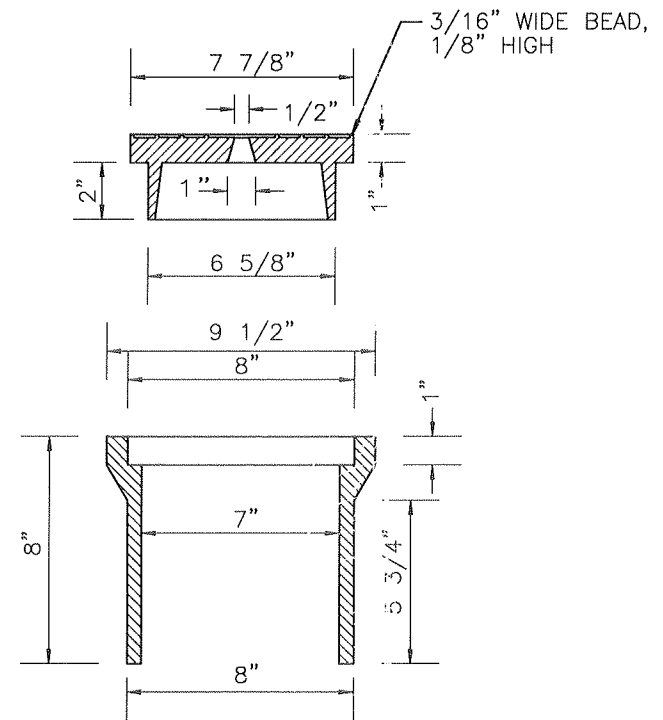


PLAN



SECTION

NOTES:

1. THE OFF-STREET MONUMENT SHALL BE THE SAME EXCEPT USING A NO. 8 REBAR AND WITHOUT A CASE AND COVER. THE OFF-STREET MONUMENT SHALL BE 3" ABOVE GRADE.

2. MONUMENT CASE AND COVER SHALL BE CAST IRON.

3. BRASS DISC SHALL BEAR LAND SURVEYOR'S REGISTRATION NUMBER.

SEE TEXT SECTION 4-03

S:\ITES\COMMON\EDS\EDDS DRAWINGS\Ch4\4130.dwg



SNOHOMISH COUNTY PUBLIC WORKS

4-130

MONUMENT CASE AND COVER

APPROVED BY:

*Stewart Norman*

2-25-03

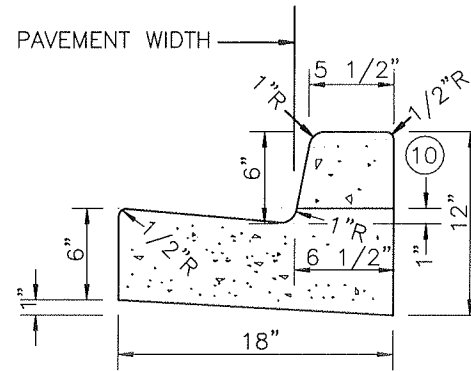
COUNTY ROAD ENGINEER

DATE

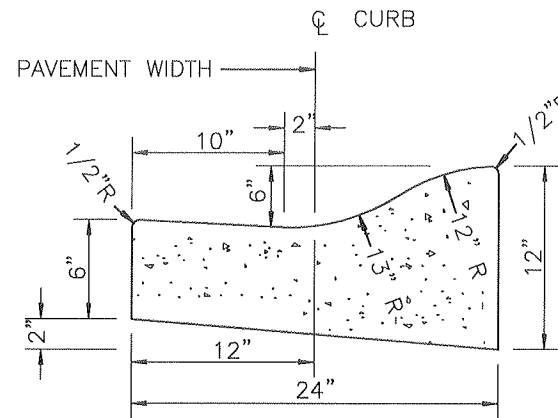
**NOTES:**

1. VERTICAL CURB WILL BE REQUIRED EXCEPT AS NOTED IN SECTION 4-04.
2. CONSTRUCTION OF CURB DETAILS SHALL BE IN ACCORDANCE WITH THE STANDARD SPECIFICATIONS FOR ROAD, BRIDGE, AND MUNICIPAL CONSTRUCTION AS PUBLISHED BY THE WASHINGTON STATE DEPARTMENT OF TRANSPORTATION AND THE AMERICAN PUBLIC WORKS ASSOCIATION. (WSDOT/APWA SPECIFICATIONS) UNLESS OTHERWISE MODIFIED BELOW.
3. ALL CONCRETE SHALL BE COMMERCIAL CLASS PER WSDOT/APWA SPECIFICATIONS.
4. FORMS SHALL BE TRUE TO LINE AND GRADE AND SECURELY STAKED. STEEL FORMS ONLY SHALL BE USED ON TANGENT SECTIONS. WOOD FORMS MAY BE USED ON CURVED SECTIONS.
5. FULL DEPTH EXPANSION JOINTS CONSISTING OF 3/8 INCH MINIMUM PREMOLDED JOINT MATERIAL SHALL BE PLACED ADJACENT TO CATCH BASINS, INLETS AND AT POINTS OF TANGENCY ON STREETS AND DRIVEWAY RETURNS. MAXIMUM SPACING SHALL BE 20 FEET.
6. CONTRACTION JOINTS (DUMMY JOINTS) CONSISTING OF 3/8" MIN. X 2" OF PREMOLDED JOINT MATERIAL SHALL BE CONSTRUCTED AT INTERVALS OF 10 FEET.
7. ALL JOINTS SHALL BE CLEAN AND EDGED.
8. FINISH SHALL BE A LIGHT BROOM FINISH.
9. FINISHED CURBS AND GUTTERS SHALL BE SPRAYED WITH A CLEAR CURING COMPOUND.
10. TOP OF CURB AT ACCESS POINT APPROACH.
11. SUBGRADE COMPACTION FOR CURBS AND GUTTERS SHALL MEET A MINIMUM 95% OF MAXIMUM DENSITY IN ACCORDANCE WITH SEC. 2-03.3(14) OF THE WSDOT/APWA SPECIFICATIONS.

SEE TEXT SECTION 4-04



**CEMENT CONCRETE  
VERTICAL CURB AND GUTTER**



**CEMENT CONCRETE  
ROLLED CURB AND GUTTER**

S:\ITES\LANDUSE\EDDS\EDDS DRAWINGS\Ch4\4140.dwg



**SNOHOMISH COUNTY PUBLIC WORKS**

4-140

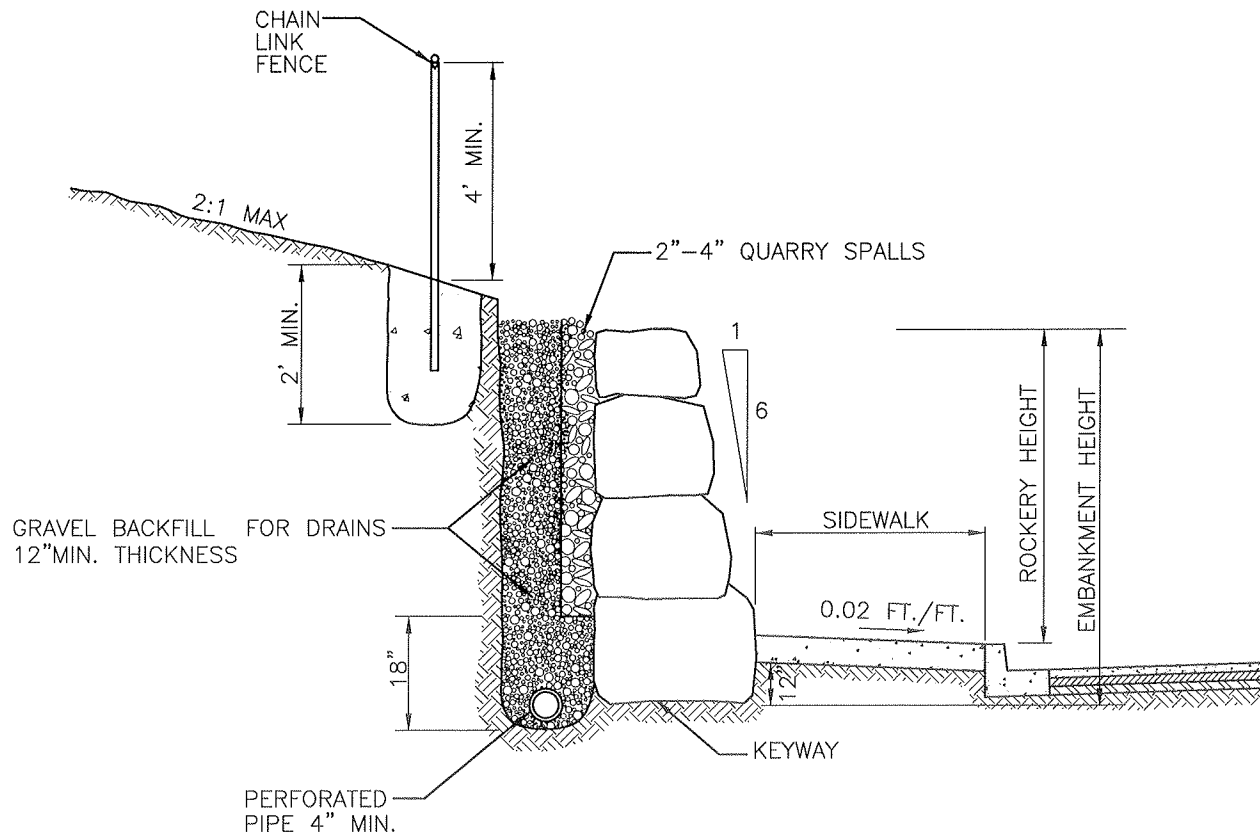
**CURB DETAILS**

APPROVED BY:

*Steve E. Thomas* 4-17-03

COUNTY ROAD ENGINEER

DATE



**NOTES:**

1. SEE TEXT SECTION 4-17. ROCKERIES SHALL BE DESIGNED BY A GEOTECHNICAL ENGINEER IF THE HEIGHT EXCEEDS 6 FT. IN A CUT SECTION OR 4 FT. IN A FILL SECTION.
2. GRAVEL BACKFILL SHALL MEET WSDOT/APWA STANDARD SPECIFICATION 9-03.12[4].
3. IF ROCKERY OR RETAINING WALL IS BEHIND ROLLED CURB OR ON A RURAL SECTION, FACE OF ROCKERY OR RETAINING WALL MUST BE A MINIMUM OF 10 FT. FROM TRAVELED WAY. A PLANTER STRIP MAY BE BETWEEN THE CURB AND SIDEWALK IN URBAN SECTIONS.
4. CHAIN LINK FENCE, TYPE NO. 4 OR 6 (WSDOT/APWA STANDARD), REQUIRED WHEN ROCKERY HEIGHT IS THREE FEET OR HIGHER.

NOT TO SCALE

S:\ITES\COMMON\EDDS\EDDS DRAWINGS\Ch4\4210.dwg



**SNOHOMISH COUNTY PUBLIC WORKS**

4-210

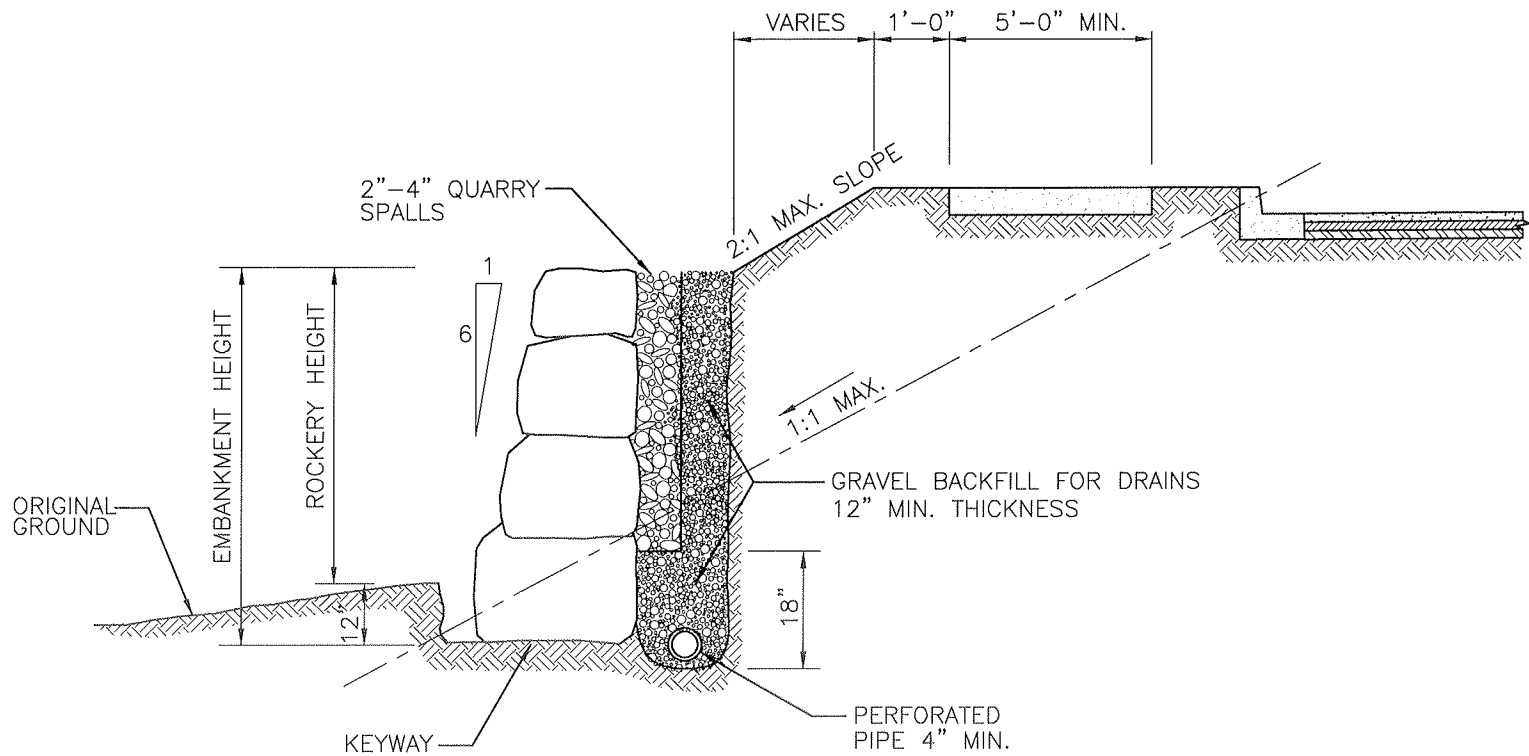
**ROCKERY, CUT SECTION**

APPROVED BY:

*Steve Norman* 2-25-03

COUNTY ROAD ENGINEER

DATE



NOT TO SCALE

**NOTES:**

1. SEE TEXT SECTION 4-17. ROCKERIES SHALL BE DESIGNED BY A GEOTECHNICAL ENGINEER IF THE HEIGHT EXCEEDS 6 FT. IN A CUT SECTION OR 4 FT. IN A FILL SECTION.
2. GRAVEL BACKFILL SHALL MEET WSDOT/APWA STANDARD SPECIFICATION 9-03.12[4]
3. FLATTER SLOPE MAY BE REQUIRED IN LESS STABLE SOIL.
4. CHAIN LINK FENCE, TYPE NO. 4 OR 6 (WSDOT/APWA STANDARD), REQUIRED WHEN ROCKERY HEIGHT IS 3' OR HIGHER.
5. TRAFFIC BARRIERS MAY BE REQUIRED ON ROADS WITH SPEED LIMITS OF 40 MPH OR GREATER, WHERE ROCKERY HEIGHTS EXCEED 6'. SEE CHAPTER 7 OF THE WSDOT DESIGN MANUAL.

S:\TES\LANDUSE\EDDS\EDDS DRAWINGS\Ch4\4220.dwg



SNOHOMISH COUNTY PUBLIC WORKS

4-220

ROCKERY, FILL SECTION

APPROVED BY:

*Steve E. Harrison*

COUNTY ROAD ENGINEER

4-17-03

DATE