

Actions to Reduce Nutrients

1. Adjust lawn care practices
2. Maintain septic systems
3. Pick up pet/animal waste
4. Re-direct runoff
5. Keep shoreline natural

#1: Adjust Lawn Care Practices

- ◆ Skip the Fertilizer
- ◆ Use a mulching mower



#1: Adjust Lawn Care Practices

If you do fertilize

- ◆ Use phosphorus-free products
- ◆ Slow release or organic
- ◆ Avoid weed-n-feed

N	P	K
22	0	12

Look for the Zero in the Middle

#2 : Inspect & Maintain Septic System

- ◆ Inspect every 2-3 years
- ◆ Pump as needed



#3: Pick up pet/animal waste, bag it, put it in trash



#4: Re-direct runoff

- ◆ Reroute pipes away from lake/ditches to planting beds, lawns, rain barrels, dry wells



#4: Re-direct runoff

- ◆ Install a rain garden



#5: Keep Shoreline Natural

- ◆ Shoreline vegetation filters out nutrients
- ◆ Most important - stops almost all sources

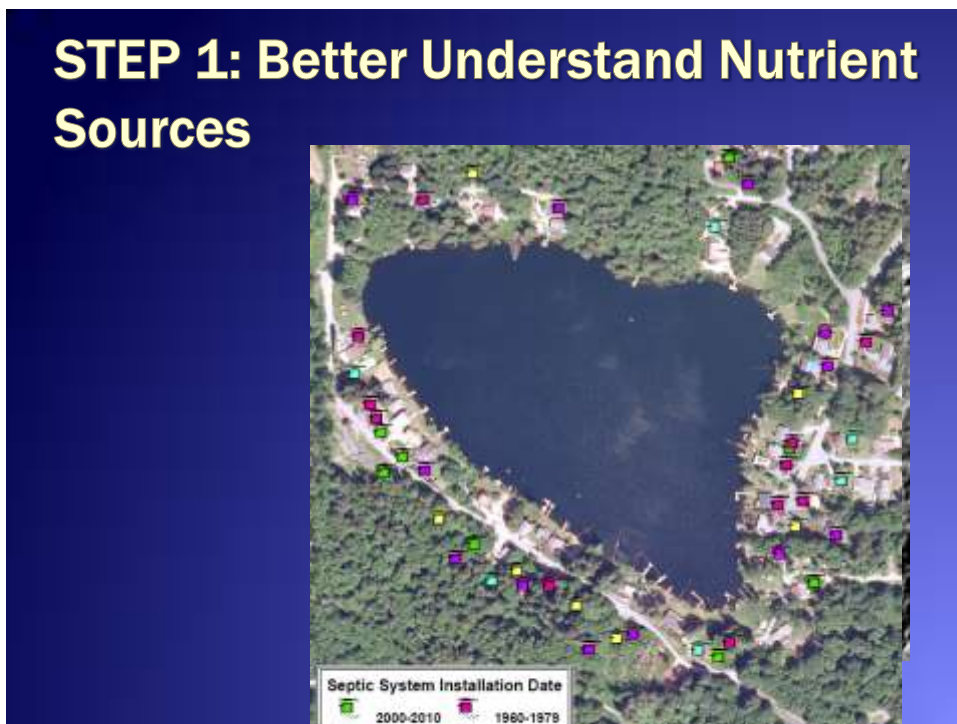






Actions to Reduce Nutrients

1. Adjust lawn care practices
2. Maintain septic systems
3. Pick up pet/animal wastes
4. Re-direct runoff
5. Keep shoreline natural



STEP 2: Learn from Others



STEP 3: Learn from You



STEP 4: Develop Effective Strategies



STEP 5: Make it Happen

- ◆ 2011
 - ◆ Conduct community surveys (WSU Extension)
 - ◆ Complete information gathering
- ◆ 2012
 - ◆ Develop outreach strategies
 - ◆ Bring to community
 - ◆ Provide resources for individuals & community
 - ◆ Workshops
 - ◆ Site Visits
 - ◆ Potential funding assistance