



DEPARTMENT OF THE ARMY
SEATTLE DISTRICT, CORPS OF ENGINEERS
P.O. BOX 3755
SEATTLE, WASHINGTON 98124-3755

REPLY TO
ATTENTION OF

JAN 23 2007

Emergency Management Branch

Mr. Dave Lucas
2731 Wetmore Avenue, Suite 300
Everett, Washington 98201

Dear Mr. Lucas:

In accordance with the requirements in 44 CFR 65.10(e), Seattle District, US Army Corps of Engineers (Corps) has completed the analysis of the Federal Flood Control Project on the Skykomish River near Startup, Washington, and has concluded that the levee can be technically certified and recommended for inclusion in Federal Emergency Management Agency's National Flood Insurance Program (NFIP). All supporting documentation is on file at the Corps office.

It is our determination that the project meets the following requirements: a) is designed in accordance with sound engineering practices, b) is built according to the plans, c) is properly maintained, and d) meets the standards pertaining to freeboard, structural design, and interior drainage to protect against the base flood.

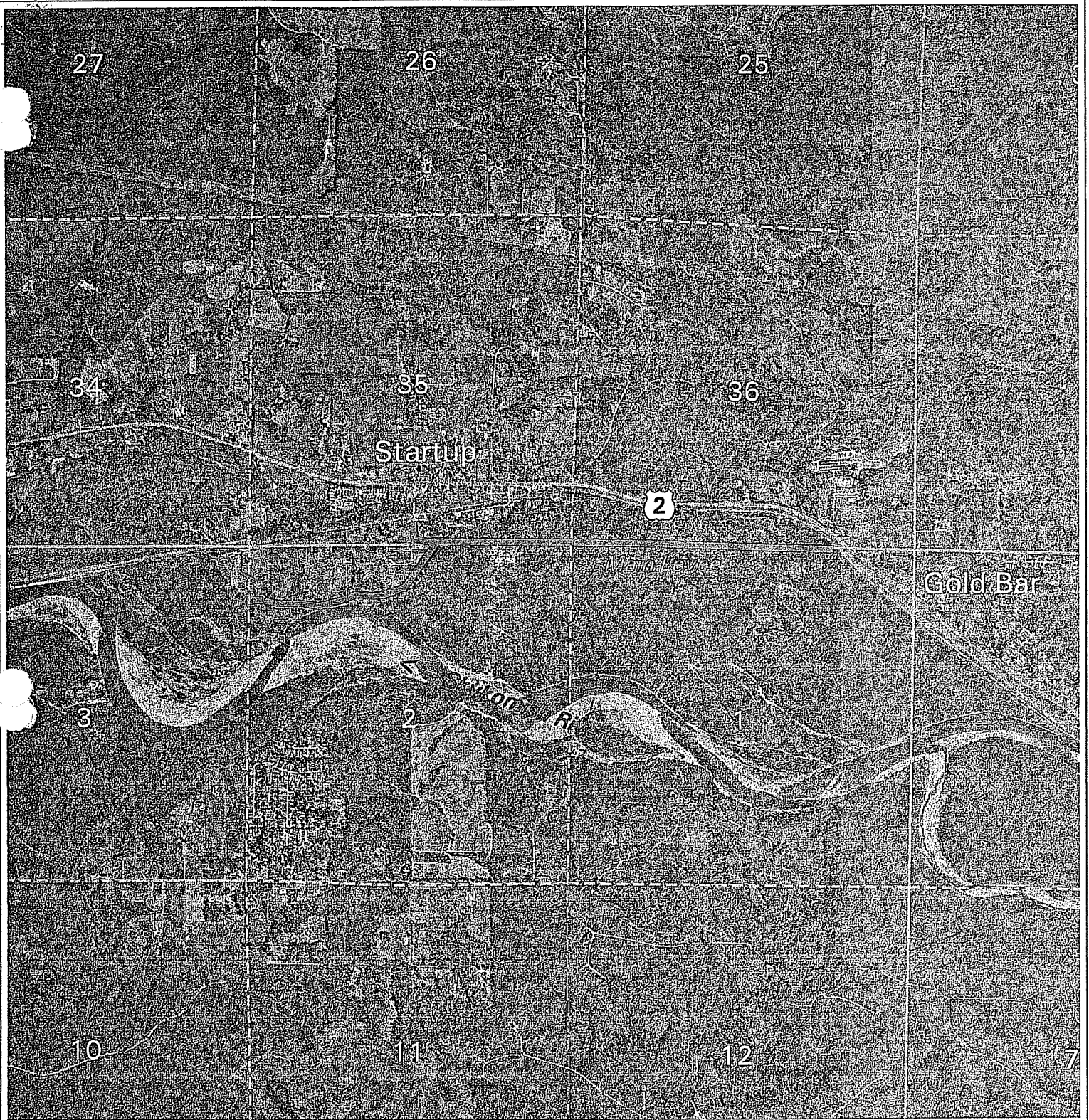
Flood Insurance Rate Maps should be updated to reflect the 100-year level of protection provided by this levee.

For any questions regarding this finding, please contact Paul Komoroske, Chief, Emergency Management Branch, at (206) 764-3406.

Sincerely,

A handwritten signature in black ink, appearing to read "Michael McCormick".

Michael McCormick
Colonel, Corps of Engineers
District Commander

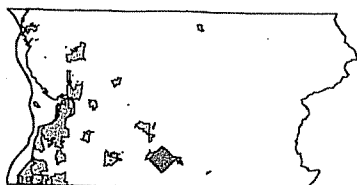


Startup Main Levee & Training Levee T27N R08E / T28N R08E



Snohomish County

PUBLIC WORKS
SURFACE WATER MANAGEMENT
RIVER MANAGEMENT



Snohomish County



Snohomish County disclaims any warranty of merchantability or warranty of fitness of this map for any particular purpose, either express or implied. No representation or warranty is made concerning the accuracy, currency, completeness or quality of data depicted on this map. Any user of this map assumes all responsibility for use thereof, and further agrees to hold Snohomish County harmless from and against any damage, loss, or liability arising from any use of this map.

**State Plane Zone 5601
NAD 83, Units Feet**

/swm/proj/diking/farms/fld_ct1.nml, 09/29/99

Startup Main Levee and Startup Training Levee

Location:

Sec. 1 and 2 T27N, R8E, W.M.

Right Bank of Skykomish River, West end 1/2 mile south of Startup on 363rd Ave. SE

Length:

7,100' in Main Levee - Both ends of this levee tie into higher ground on the existing Burlington Northern - Santa Fe Railroad grade; the upstream end approximately 1/4 mile west of the Town of Gold Bar and the downstream end at 363rd Avenue NW and the Wallace River Bridge #70.

2,700' in Training Levee - The upstream end of this levee begins approximately 700' east of west end of the Main Levee (at west end access gate). The embankment extends downstream adjacent to a side slough and then main channel of the Skykomish River. The downstream end of embankment daylites into the existing ground elevation.

Access:

The west end of the Main Levee is accessed from 363rd Avenue SE in Startup (south of U.S. Highway 2).

The east end of the Main Levee can be accessed from a private gated road located between the Skykomish River and the railroad tracks. Entrance to this road is approximately 1/2 mile east of Gold Bar on U.S. Highway 2. For information regarding east end road contact Burlington Northern - Santa Fe Railroad.

There is a locked gate at both ends of the main levee embankment. Snohomish County Road Maintenance Division 2 and River Management hold keys to the west end lock. East end gate has Snohomish County combination lock - combination 3489.

Note: In the past the locks on the east and west gates across the Main Levee road have been changed by the local property owners without notice to the Snohomish County Department of Public Works.

The Startup Training Levee is accessible to large equipment. The travel way on the top of the embankment can be reached by driving off the main levee embankment near the west end gate of the main levee. Combination 3001.

Remarks:

The main levee and training levee was built by the Army Corps of Engineers with an "obligation to assume" agreement between the United States and Snohomish County Board of Commissioners. This agreement requires the county to operate and maintain the structure.

These structures are presently maintained by the Snohomish County Department of Public Works.

Refer R.I. File 88-705 Startup Levee
Refer R.M. 91-05 Startup Training Levee

"Easement and right-of-way Agreement" Dated May 27, 1965.

Agreement with Simpson Properties, Inc. and Rivers Edge Property Owners Agreement; Vol. 1931, Page 2063 - Dated October 31, 1985.

Main levee constructed by in 1965, Training levee built 1969. Resolution for construction, maintenance and operation between Snohomish County and United States (Army Corps of Engineers) August 31, 1964.

Flood Control Improvements - Skykomish River - Wallace River, Startup, Washington - Operation and Maintenance Manual U.S. Army District, Seattle, Corps of Engineers,

The project, authorized by the Chief of Engineers 6 December 1963 and 7 October 1968 under section 205 of Public Law 858, *0th Congress, as amended, provides for a levee about 7,000 feet long between Skykomish and Wallace Rivers and joining Burlington Northern railway embankment at each end, and a side channel to divert flow away from the levee and protect the town of Startup from flooding, and a training levee about 2,4000 feet long to protect downstream farmlands.

The work was completed in October 1965, except for the training levee, completed in September 1969, and transferred to Snohomish County for maintenance.

Cost of construction: \$271,713. Estimated non-Federal Cost were \$23,500.

Project Sky-1-95 drawing E-25-11-1, 250 l.f. bank protection 2 Oct 1996

Structure Status: 9/99

- Good
- Maintained regularly

2001 Inspection Remarks:

Both structures in good condition. River erosion is continuing upstream of Training levee at 1996 Corps repair site.

Recommendations:

On-going maintenance and determination of damage potential from continued river erosion into Training Levee prism.

Structure Status

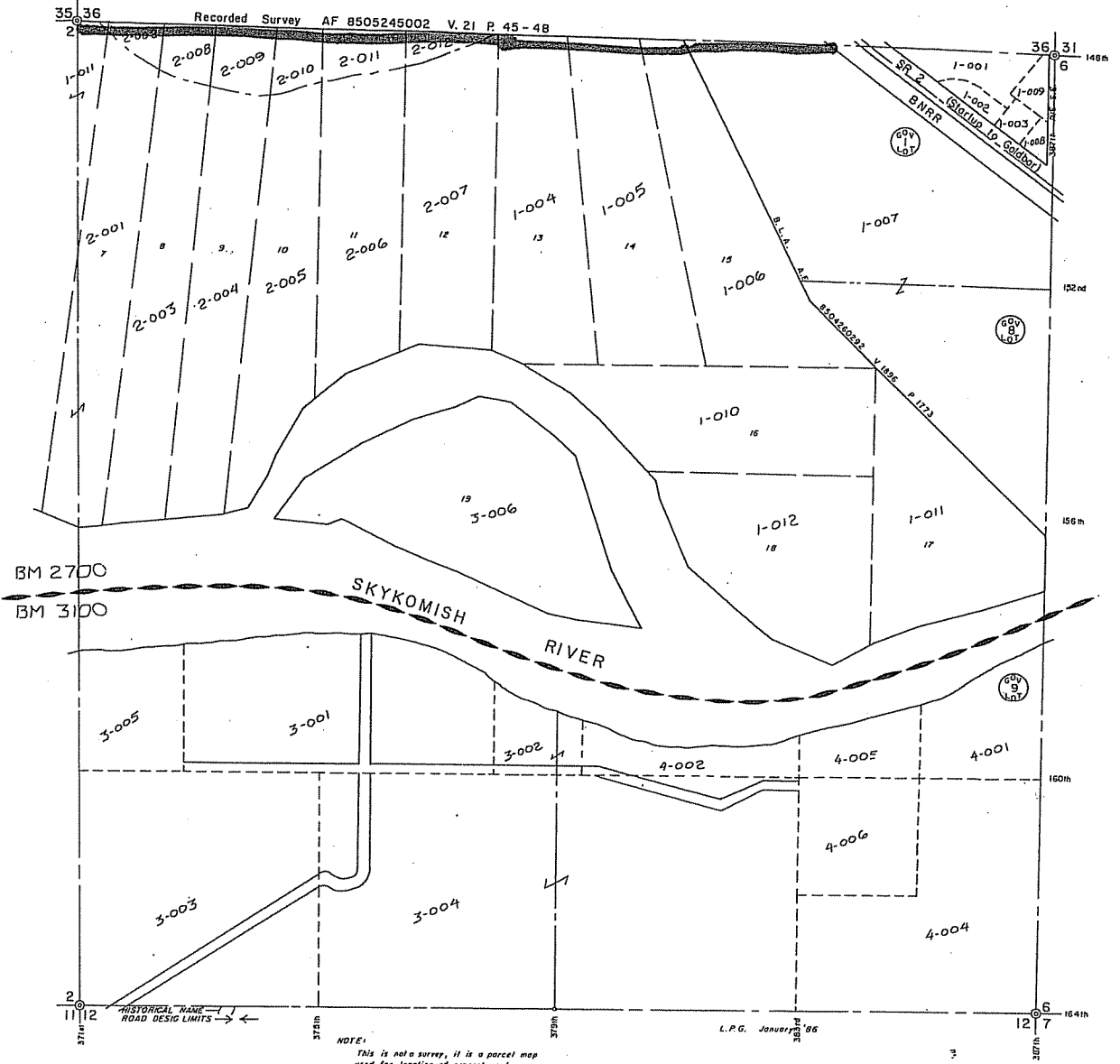
Good Fair Poor Other:

Remarks: _____

Training Levee is vulnerable to bank erosion.

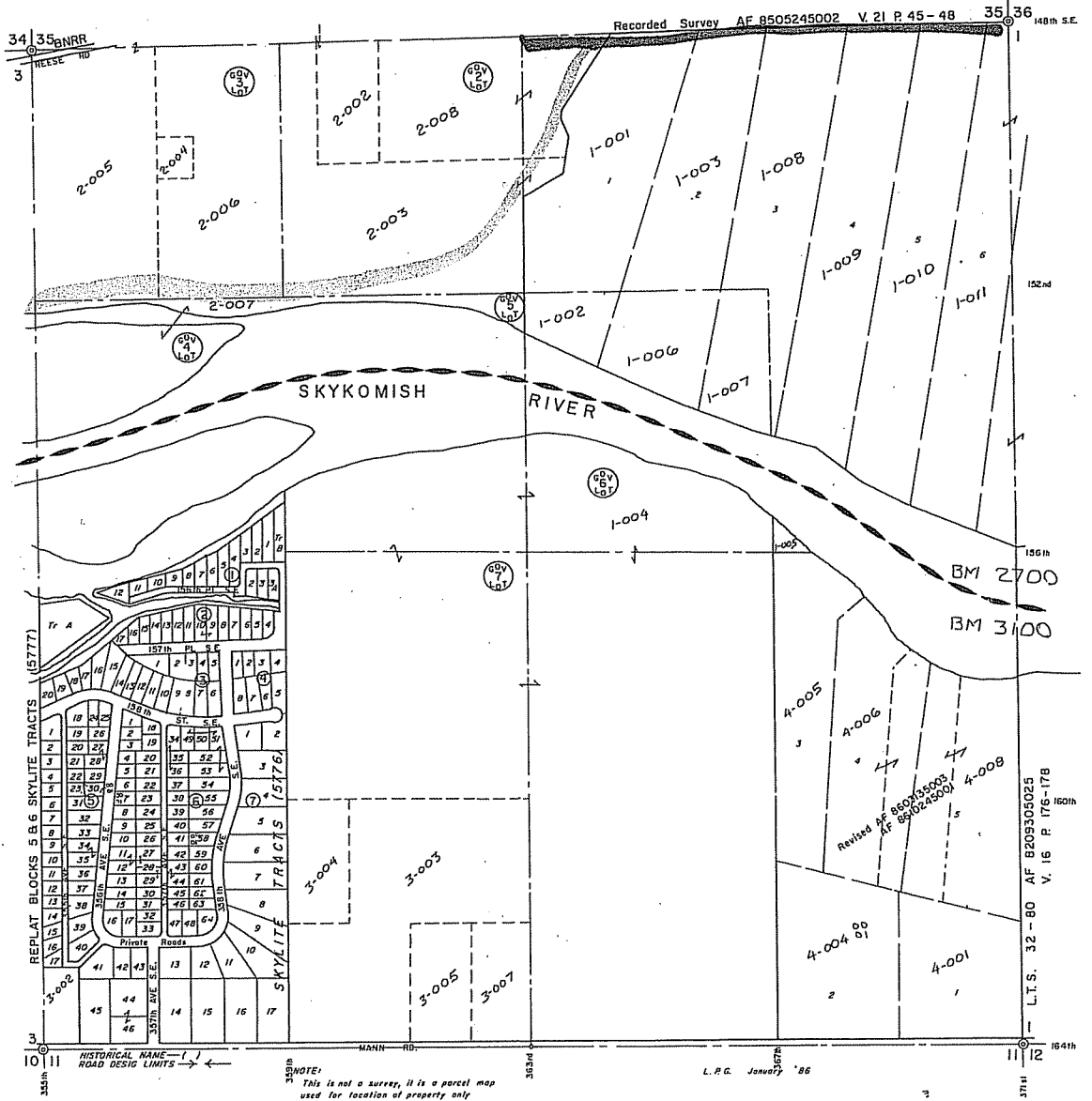
SEC. 1, T. 27 N., R. 8 E. W.M.

1" = 400'



SEC. 2, T. 27 N, R. 8 E. W. M.

1" = 400



HISTORICAL NAME - I - J
ROAD DESIGN LINES - <

NOTE:
This is not a survey, it is a parcel map
used for location of property only

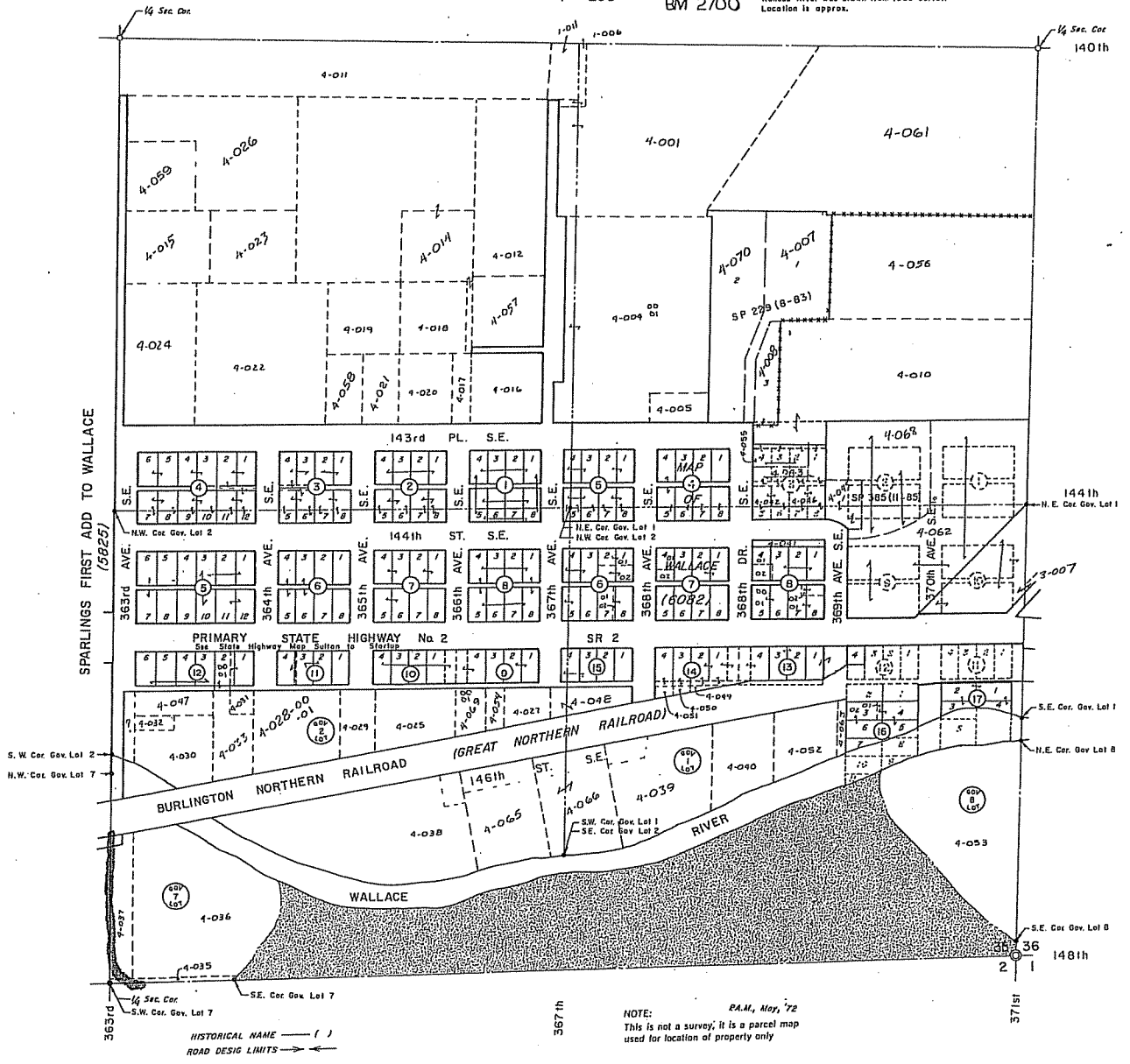
L.P.C. January '86

3711

S.E. 1/4, SEC. 35, T.28N., R.8E.

1" = 200' BM 2700

Wallace River was drawn from 1969 aerial. Location is approx.



SPARLINGS FIRST ADD TO WALLACE (5825)

S.W. Cor. Gov. Lot 2
N.W. Cor. Gov. Lot 7

363rd AVE. S.E.
364th AVE. S.E.
365th AVE. S.E.
366th AVE. S.E.
367th AVE. S.E.
368th AVE. S.E.
369th AVE. S.E.
370th AVE. S.E.

PRIMARY STATE HIGHWAY No 2
SR 2

BURLINGTON NORTHERN RAILROAD
GREAT NORTHERN RAILROAD

WALLACE RIVER

NOTE: R.A.M., May, '72
This is not a survey, it is a parcel map used for location of property only

HISTORICAL NAME (/)
ROAD DESIGN LIMITS < - - - >