

# FLEXIBLE LEVELER

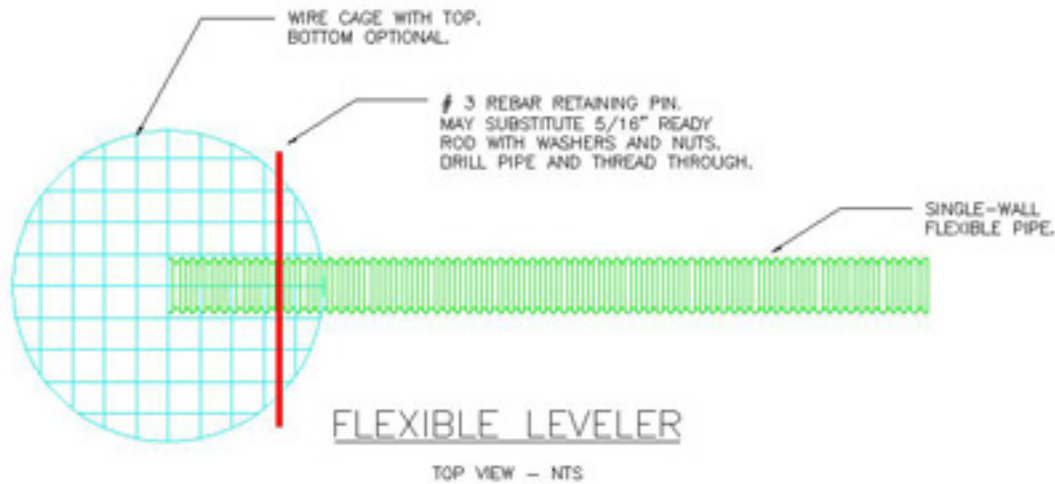
SNOHOMISH COUNTY PUBLIC WORKS

ADAPTED FROM SKIP LISLE (2001)

DRAWN BY: D. LUCAS

DATE: 11-14-01, REVISED 9-1-02

CONTACT: JAKE JACOBSON 425-388-3464 X6428



## CONSTRUCTION NOTES:

1. CONSTRUCT WIRE CAGE USING HOG RINGS FOR FASTENERS. OVERLAP ONE SECTION FOR CAGE WALL.
2. CUT OUT HOLE FOR FLEXIBLE PIPE IN CAGE WALL.
3. IF CAGE IS BUILT WITH NO BOTTOM, CUT OUT LOWER HORIZONTAL WIRE BETWEEN VERTICAL WIRES TO ALLOW CAGE TO SETTLE INTO STREAMBED.
4. REMOVE DAM AS NEEDED TO PLACE FLEXIBLE PIPE. REPLACE DAM AFTER LEVELER IS INSTALLED.
5. STAKE SINGLE-WALL HDPE PIPE EVERY 6 FT. TO PREVENT IT FROM FLOATING OR BEAVERS FROM MOVING IT. USE TWO T-POSTS AND WIRE BETWEEN THEM AND OVER THE TOP OF THE PIPE TO SECURE THE PIPE.
6. DRILL 3/8" HOLE IN CULVERT FOR REBAR TO ALLOW FOR FRICTION FIT. IF READY ROD IS USED, PLACE WASHERS NEXT TO PIPE AND SECURE WITH DOUBLE NUTS.
7. ONE (1) 16' SECTION OF FENCING WILL CONSTRUCT A CAGE WALL APPROXIMATELY 5' IN DIAMETER. AN ADDITIONAL SECTION IS NEEDED TO CONSTRUCT THE TOP AND BOTTOM OF EACH CAGE.
8. PIPE DIAMETER SHOULD BE SIZED TO PASS THE STREAM BASE FLOW.
9. FINAL LAYOUT OF THE PIPE SHOULD ALLOW FOR A SHALLOW GRADIENT TO FACILITATE FISH PASSAGE.

