

County Replaces Sauk River Bridge in Darrington

Project History:

2004

- Identified for replacement
- Design alternatives developed

Feb 2005

- Newsletter
- SEPA Environmental Checklist and DNS Issued
- Public meeting
- Design Alternatives presented
- Comment period
- Notice of Action (NOA) mailed to public and printed in Herald

2005-2006

- Finalized design
- Obtained Federal, County, and State permits
- Received FHWA funding

2007

- Advertised Project for construction January 2007
- Awarded construction contract to Mowat Construction March 2007

2009

- Project Completion



Background

Snohomish County has begun construction to replace Bridge #414, a 522-foot long structure built in 1929-30 across the Sauk River on Sauk Prairie Road, approximately one mile northeast of Darrington. The bridge needs to be replaced because concrete footings supporting the trusses have been compromised by scour and the structure itself is functionally obsolete. This bridge provides the only access for some 300 people in the Darrington-Sauk Prairie area, and replacing it is vital to maintaining safe access to the Darrington-Sauk Prairie area.

The new bridge will meet current County design and safety standards for bridges and will accommodate wider, modern vehicles. A study of type, size and location identified a two-span steel-truss as the best option for these reasons:

- Least costly structural alternative
- Lowest overall project cost
- Roadway profile provides best compatibility with surrounding land uses (Hampton Mill)
- Aesthetics of the truss structure match the rural character of the surrounding area

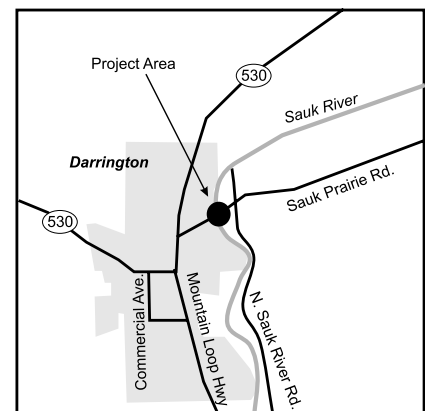
Construction

The new bridge is being built parallel to and downstream from the existing bridge, which will be demolished in 2009 when the new bridge is completed. New approach roadways will also be constructed to tie in at each end of the new structure.

Work will shut down for the winter in November 2007 and resume in early 2008.

Traffic impacts should be minimal since the old bridge will be open for traffic until the new bridge is finished. There will be temporary traffic delays associated with one-lane or brief bridge closures. Unfortunately, construction of this magnitude may also create noise and dust in the immediate area of the bridge. Emergency vehicles will have access at all times.

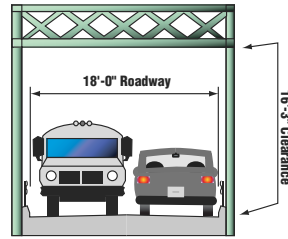
When construction is complete, large woody debris will be placed in the side channel upstream from the bridge to enhance fish habitat. Native trees and shrubs plantings will also be planted as part of mitigation in the project area. An information Kiosk describing the old bridge will also be placed in the southwest corner of the bridge.



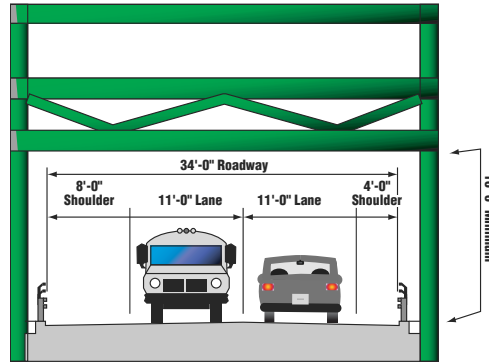
Sauk River Bridge No. 414 Replacement Project

Sauk River Bridge Project Contact Information

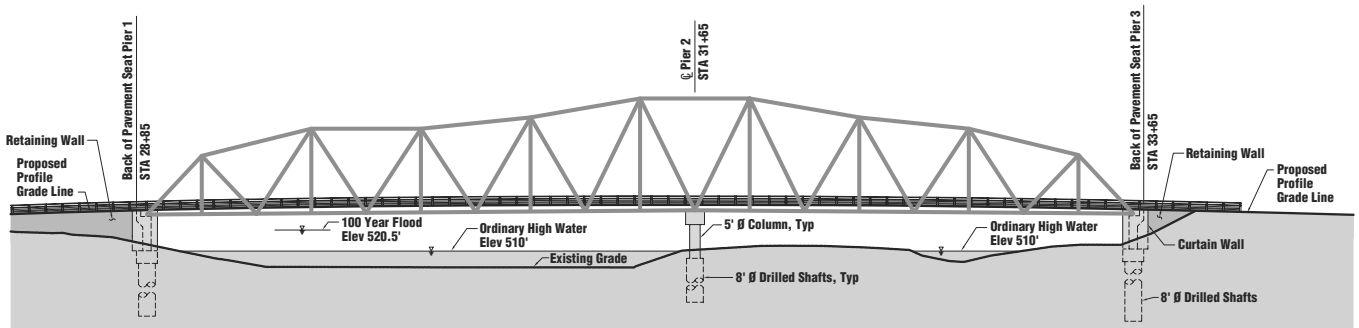
- Project Manager:**
 Jeri Bernstein,
 425-388-3195 or
jeri.bernstein@co.snohomish.wa.us
- Communications:**
 Tina Hokanson
 425-388-3789
 or tina.hokanson@co.snohomish.wa.us
- For Information on other Snohomish County Transportation Projects:**
 Visit the County's website (www.snoco.org) and type "Roads Central" in the search box.




Existing Bridge Section



New Bridge Section




Snohomish County
Public Works
Engineering Services
 3000 Rockefeller Ave., M/S 607
 Everett, WA 98201

Project Update
Sauk River Bridge #414
Replacement

County Executive Aaron Reardon