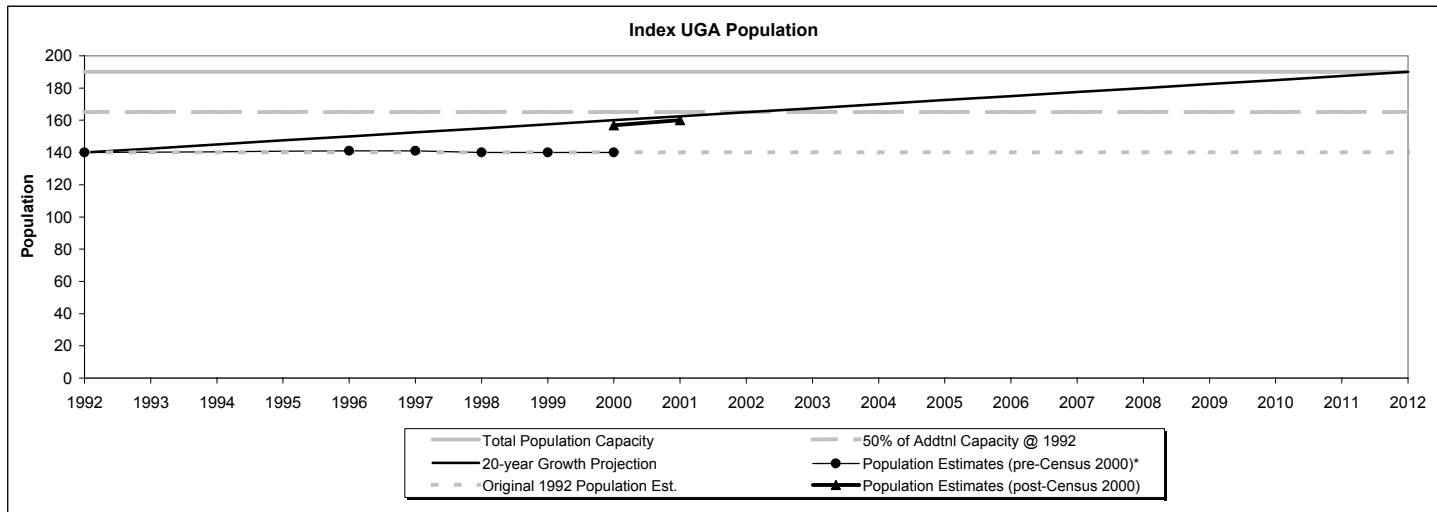


Snohomish County Tomorrow 2001 Growth Monitoring Report

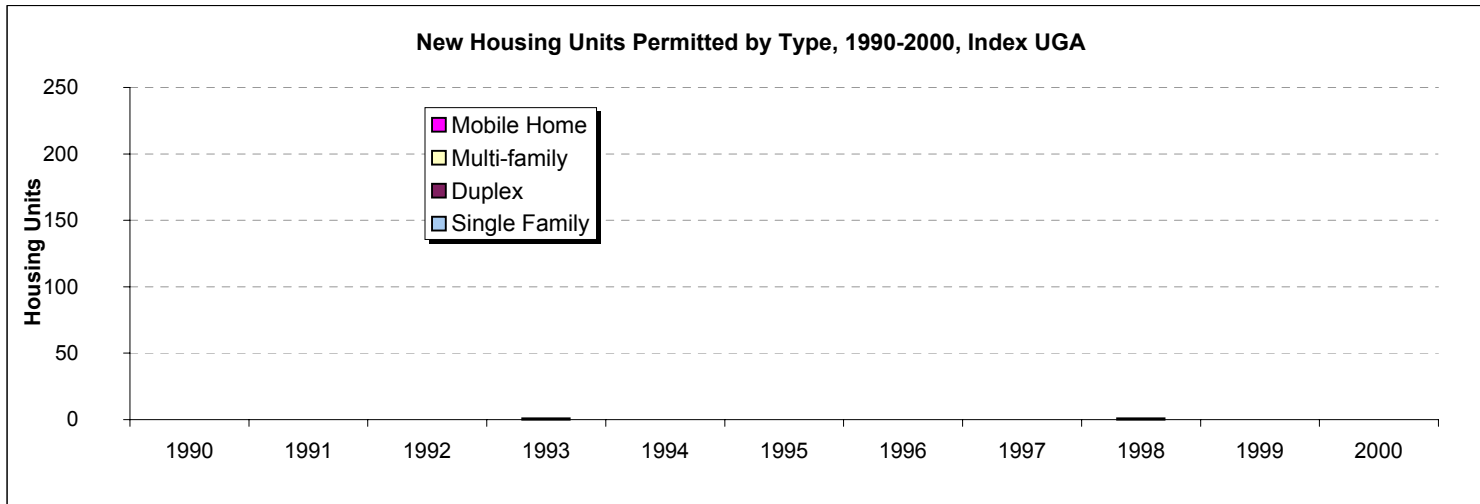


Index UGA Population Statistics

	Revised 1992 Pop Estimate**	Population Estimates**					Census 2000 Diff. (Census-Est.)			2001 Pop Estimate**	1992-2001 Change			2001 Interpolated Population (based on 1992-2012 growth)	2001 Pop Est Compared to Interpolated Pop (% Diff)	Revised 2012 Pop Target**	% of 1992-2012 projected growth attained by 2001 (45% expected if linear growth assumed)	Total Pop Capacity**	% of Addntl Capacity as of 2001
		1996	1997	1998	1999	2000	Pop**	No.	Pct.		Absolute Change	Percent Change	Average Annual % Chng						
Index UGA	140	141	141	140	140	140	157	17	12.1%	160	20	14.3%	1.5%	163	-1.5%	190	40.0%	190	40.0%
Index City	140	141	141	140	140	140	157	17	12.1%	160	20	14.3%	1.5%	163	-1.5%	190	40.0%	190	40.0%
Unincorporated	NA	NA	NA	NA	NA	NA	NA	NA	NA	NA	NA	NA	NA	NA	NA	NA	NA	NA	NA

* -- Black dots indicate population estimates, line represents interpolated population
 ** -- using February 28, 1993 city boundaries.

Snohomish County Tomorrow 2001 Growth Monitoring Report



Index UGA Housing Units Permitted

Index UGA (all Incorp.)	1990	1991	1992	1993	1994	1995	1996	1997	1998	1999	2000	Total New Housing Units	
												1990-2000	Percent of Total
SF	0	0	0	1	0	0	0	0	1	0	0	2	100.0%
DUP	0	0	0	0	0	0	0	0	0	0	0	0	0.0%
MF	0	0	0	0	0	0	0	0	0	0	0	0	0.0%
MH	0	0	0	0	0	0	0	0	0	0	0	0	0.0%
TOTAL	0	0	0	1	0	0	0	0	1	0	0	2	100.0%