

Snohomish County
Developmental Disabilities

Community Plan



UPDATED 2011

Includes current issues and efforts that are being made to improve the quality of life for individuals with developmental disabilities and their families.



PUBLICATIONS CREATED BY
SNOHOMISH COUNTY HUMAN SERVICES
DEVELOPMENTAL DISABILITIES

3000 Rockefeller MS 305
Everett, WA 98201
425-388-7320

Email: ddinfo@snoco.org

This publication is available at our website:
www.snoco.org Search Developmental Disabilities



Snohomish County

Aaron Reardon
County Executive

3000 Rockefeller Avenue
Everett, WA 98201-4046

Dear Fellow Residents,

Welcome to the Snohomish County Developmental Disabilities Resource Books, designed to provide you with helpful information that can shape and improve your quality of life.

Individually, each booklet in the four book series provides a wealth of information. Collectively they create an opportunity for making the most of services offered by the Snohomish County Human Services as well as connections to programs offered by other organizations and non-profit service providers within the area.

The topics in the series are:

- **Community Plan** - Current issues and efforts being made to improve the quality of life for individuals with developmental disabilities and their families.
- **Resource Guide** - Description and contact information for more than 300 resources.
- **Building a Successful Future** - Information to help you understand community resources and plan for your future.
- **Career Path Services Guide to Employment** Supports for individuals interested in working and contributing in their community.

Together we can make Snohomish County a better place to live, work and play. Thank you for letting us do our part.

Sincerely,

Aaron Reardon
County Executive



WHAT'S INSIDE

Mission Statement and Governing Principles	1
County Guidelines.....	2
Community Plan.....	3
Community Connections	4
Economic Status and Employment	5
Education.....	6
Family and Children	7
Health Care.....	8
Housing	9
Transportation.....	10
Overview of Services	11
Early Intervention Services	12
Building Inclusive Communities	13
Leadership and Education	14
Connecting Families	15
Career Path Services.....	16
Social Security Benefits Assistance Program.....	17
Independent Planning Services	18
High School Transition Coordination.....	19
Community Advisory Groups.....	20
2010 Snohomish County Program Outcomes	21
2011 Public Policy Guideline.....	22
Snohomish County Community Profile.....	24
State Contracted Services.....	25
Message from Snohomish County Coordinator	26

The Snohomish County Mission Statement and Governing Principles

The Mission Statement and the Governing Principles were developed in conjunction with the Citizen Advisory Board and serve as a guide to Snohomish County Developmental Disabilities in the development of public policy, supports and services.

Mission Statement

Foster inclusive communities that support people with developmental disabilities to fully participate in and contribute to all aspects of community life.

Governing Principles

Individualized Supports

Design and develop support to meet the specific needs and goals of each individual.

Choice

Create opportunities for individuals to have choices in their community and support individuals in advocating for themselves.

Community

Promote community-based options.

Inclusion and Contribution

Promote inclusive/diverse communities so that people have opportunities to achieve meaningful and purposeful lives.

Access

Promote individual and community accessibility.

Diversity

Promote culturally relevant supports, while respecting and supporting individuals' uniqueness and diversity.

State Division of Developmental Disabilities County Guidelines

REVISED AND UPDATED 1992

The Washington State Department of Social and Health Services Division of Developmental Disabilities, individuals with developmental disabilities and their families, and counties and service providers created the following County Guidelines to bring consistency across the state and frame the scope of work complimentary to Snohomish County's Governing Principles. Counties are required to incorporate these guidelines in all community services.

The County Guidelines recognize the need to offer services and resources that meet individual needs and promote activities and relationships consistent with most citizens. These include:

Power and Choice

Having power, control and ownership over personal affairs, receive necessary support to pursue one's personal interests and goals and the opportunity to make choices and direct one's life.

Relationships

Having people in a broad range of relationships including family, friends, peers and others to love and care about and will reciprocate those same feelings.

Status Contributions

Feeling good about one self, being recognized for one's contributions; being valued and receiving positive recognition.

Community Integration

Actively participating in the community and using the same resources and enjoying the same activities as other citizens.

Competence

Having experiences that promote the ability to skillfully perform functional and meaningful activities and receive assistance as needed and desired.

Health and Safety

Being safe, secure and healthy; living, working and playing in areas common to other citizens and having the necessary assistance available to protect health and safety while promoting inclusion in the community.

Snohomish County Developmental Disabilities Community Plan

The Community Plan is the result of a community planning process that sought to assess the existing support system and challenges faced by individuals with developmental disabilities in our community.

The plan is routinely updated and reviewed by the Snohomish County Developmental Disabilities Citizens' Advisory Board and members of the community to confirm underlying principles and define our vision of how individuals with developmental disabilities are an integral part of our families, neighborhoods and communities.

The following theme areas and goals were developed during a series of community discussions that brought together key informants in each of the specific planning areas. The Community Plan is a template for the County and community at-large in the development of strategic activities that seek to close service gaps and create more inclusive, welcoming communities in Snohomish County.

Most people with disabilities receive limited support from publicly funded community services. It is essential to build communities and supports to make our communities inclusive and accessible for everyone. By working toward the following goals we can make our community a better place to live, work and play.

The Community Plan is complimented by several Snohomish County resource books that outline strategies, efforts and resources in place to address the following theme areas.

Community Plan Theme Areas

- Community Connections
- Economic Status and Employment
- Education
- Family and Children
- Health Care
- Housing
- Transportation



Community Connections

Individuals with developmental disabilities will have access and opportunities to fully participate in their communities

Goals:

- Provide inclusive, accessible and supported opportunities in the community.
- Provide up-to-date and accurate information.
- Support individuals to develop and achieve their personal goals.

Strategies:

- Provide planning services and support to individuals to work, volunteer and participate in their community.
- Develop and update resource materials to assist individuals in accessing their community.
- Provide support and training to self-advocates, families and community members to increase their knowledge base and advocacy skills.
- Support self-advocates participation in advocacy groups, trainings, community boards/councils and leadership roles.
- Collaborate with community agencies and organizations to increase inclusive opportunities in the community.



Economic Status and Employment

Individuals with developmental disabilities will have meaningful employment

Goals:

- All individuals interested in working in their community will receive individualized and adequate support.
- Community businesses will actively support employment opportunities for people with developmental disabilities.
- Students leaving school will be working and actively involved in their community.
- Individuals will have the personal power and opportunities to make choices and contribute to society.

Strategies:

- Provide planning support to assist individuals to develop and reach their individualized career path goals.
- Provide information and training to self-advocates, families, vocational staff and schools; including training opportunities to increase individualized support to individuals with significant disabilities.
- Educate the community about the benefits of employing individuals with developmental disabilities and enlist businesses to partner and create new opportunities for jobs.
- Work collaboratively with local school districts, the Office of the Superintendent of Public Instruction (OSPI), Department of Vocational Rehabilitation (DVR), Department of Services for the Blind (DSB), employers and the community to promote employment of individuals with developmental disabilities.
- Maximize Social Security Work Incentives by providing individuals and families with benefits analysis services and assistance to write and monitor work incentive plans. (PASS/IRWE).
- Provide information and support to youth and their families as students' transition from school.
- Educate policy makers about the needs of individuals receiving support and those waiting for services.



Education

Students with developmental disabilities will participate in integrated and supportive environments to learn life skills and community-based work skills they can use throughout their lives

Goals:

- Provide early intervention services in the schools.
- Increase coordination, collaboration and networking opportunities between schools, family and community.
- Promote self-advocacy and self-determination.
- Provide seamless transitions throughout the school years maximizing the student's potential.

Strategies:

- Increase awareness of community resources and events.
- Increase self-advocacy, education and efforts.
- Provide clock hours at trainings for school personnel.
- Assist individuals' transition from school to their community and employment through transition coordination efforts including meeting with students/families, the annual Transition Fair and monthly Transition Council meetings.
- Increase opportunities for parents to develop support networks.



Family and Children

Families will have access to information and support

Goals:

- Increase quality, safe child care and respite opportunities.
- Provide accessible and accurate information and resources in a variety of formats.
- Provide planning support for families to create an individualized plan for the future.
- Provide support for families to actively participate in their community.

Strategies:

- Increase student and family awareness of community resources and events.
- Provide STARS credits for child care workers.
- Provide support to families to develop positive networks and receive information / support through trainings, community meetings, support groups, community activities and information fairs.
- Provide an opportunity for individuals to participate in person-centered planning.



Health Care

Individuals with developmental disabilities will have access to good health care

Goals:

- Provide information on health resources and preventive health care.
- Provide information to families on assistive technology, adaptive equipment, mental health and Medicaid services.

Strategies:

- Provide accessible and accurate resource materials and trainings.
- Provide outreach to medical professions regarding resources available for Individuals with developmental disabilities and their families.
- Support individuals and families to actively participate on health care related boards and commissions.
- Advocate for full coverage of mental health services and therapies by private health insurance companies and Medicaid.
- Advocate within the health care system for increased Medicaid reimbursement thereby increasing the number of medical professionals that will accept Medicaid
- Advocate for training and competitive wages for Personal Care providers.



Housing

**Individuals with developmental disabilities
will have access to affordable, accessible and safe housing**

Goals:

- Families will be aware of housing resources and supports.
- Families will have the information needed to plan ahead.
- Individuals will receive the support necessary to live in the community.

Strategies:

- Collaboratively coordinate with agencies invested in providing affordable and accessible housing.
- Assist individuals and families to look at all resources including families, friends, and private, public and community resources.
- Provide up-to-date, accurate and reliable information regarding housing options and resources.
- Support individuals with disabilities and their family members to participate as advocates on housing boards, task forces and consortiums.



Transportation

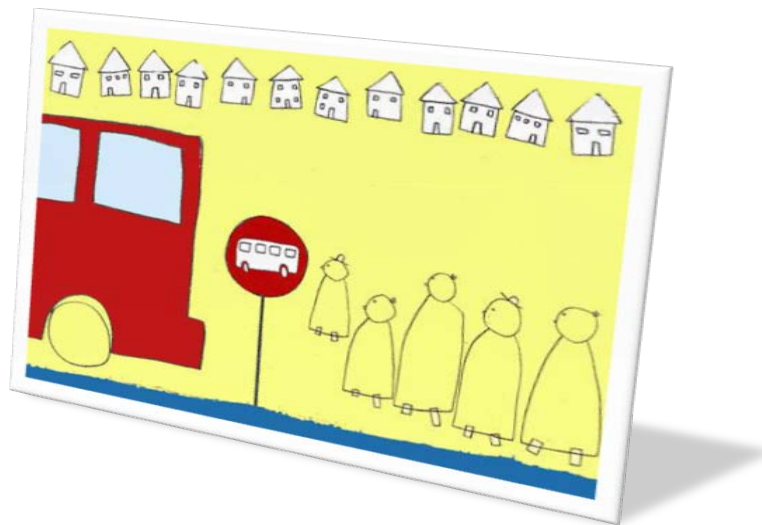
Individuals with developmental disabilities will have access to a coordinated transportation system

Goals:

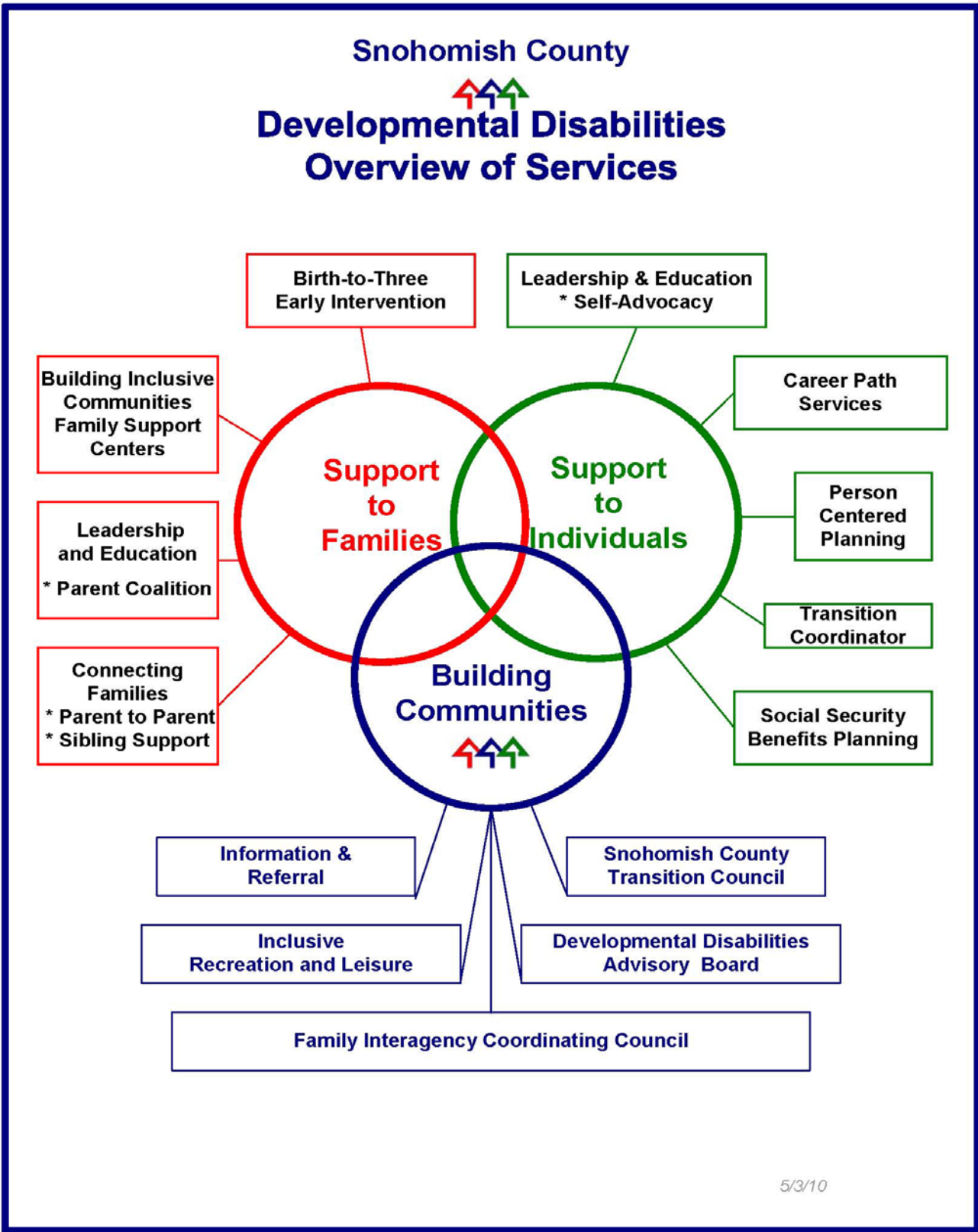
- Increase awareness of transportation options and services.
- Improve coordination within existing community resources.
- Increase transportation options in rural areas.
- Increase collaboration between transportation agencies.

Strategies:

- Increase public transportation options that make reasonable access to the community possible.
- Have representation by individuals with disabilities and family members on the Special Needs Transportation Coalition (SNOTRAC) to address the goals stated above.



Overview of Services



Early Intervention Services

*Develop individualized plans for children ages birth to three who have developmental delays and health concerns.
Provides support to families to enhance each child's development.*

Targeted Outcomes:

- Each family will have access to a Family Resources Coordinator.
- Families will be connected to community resources and receive the support necessary to be a teacher, advocate and decision-maker for their child.
- Families will receive services based on an Individualized Family Service Plan (IFSP).
- Federal, state and education dollars are coordinated to provide services for children and families.
- Services will be provided in **natural learning environments**, including the family home, neighborhood or community setting in which children without disabilities participate.
- Families will receive assistance in transitioning into school and community resources at age three.

2010 Monthly Average Outcomes

99% of the children received services in natural environments

An average of 577 children/families received early intervention services a month

Community Partners

There are 9 Early Intervention Services qualified providers in Snohomish County

Family Resources Coordinator
425-388-7402 or 800-927-9308
InfantToddlerProgram@snoco.org

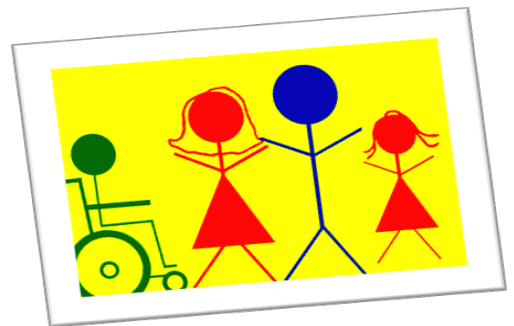
Building Inclusive Communities Snohomish County Family Support Centers

Support individuals to access and fully participate in their communities

Targeted Outcomes:

There are eight Family Support Centers located throughout Snohomish County and each Center is focused on meeting the following outcomes:

- Promote welcoming, inclusive and accessible communities for individuals with developmental disabilities in the family support centers and local communities.
- Increase volunteer opportunities for individuals with developmental disabilities.
- Develop peer support for individuals with developmental disabilities.
- Assist individuals to connect to their communities and utilize generic community resources.
- Provide multicultural outreach.



2010 Monthly Average Outcomes

Individuals with developmental disabilities
volunteered a total of 129 hours/month at the eight Family Support Centers

Community Partner

Lutheran Community Services
206-694-5773

County Liaison

Tamra Bradford
425-388-7320



Leadership and Education

Provide education and support for individuals with developmental disabilities and their family members to become informed and effective community advocates

Targeted Outcomes:

- Provide support and training to self-advocates, families and community members to increase their knowledge base and advocacy skills.
- Support individuals and family members to participate on community boards, advocacy groups, trainings and in leadership roles.
- Collaborate, educate and raise awareness of the capacities and needs of individuals with developmental disabilities and promote the development of welcoming and inclusive communities.
- Inform public policy-makers regarding the abilities and needs of individuals with developmental disabilities and their families.
- Develop and support self-advocacy groups and provide ongoing support/guidance.
- Provide outreach and community education on self-determination and advocacy.
- Include Self-Advocacy L.E.A.D. (Leadership, Education, Advocacy and Determination) and Parent / Family Coalition.



2010 Outcomes

18 family members and self-advocates actively participate on community boards and advisory committees.

33 leadership and advocacy presentations were provided

3 self advocacy groups Transition Club, ICAN Womens Group, Men's Self Advocacy Group

28 community members attended advocacy day



Community Partner

The Arc of Snohomish County
425-258-2459

County Liaison

Tamra Bradford
425-388-7320



Connecting Families

Assess the needs of families and provides outreach, support and information to families who have a child with a developmental disability

Targeted Outcomes:

- Document and address the unmet needs of families.
- Develop and update resource materials to assist individuals in accessing their community.
- Connect and support families based on their interests, informational needs, support needs and geographical location.
- Provide educational opportunities, trainings and informational materials.
- Identify supports and train experienced *Helping Parents*.
- Match new families with an experienced *Helping Parent*.
- Provide opportunities for siblings to network receive information and build relationships.
- Develop and support networking opportunities.
- Include Parent-to-Parent and Sibling Support.

2010 Outcomes

- 319 people attended 32 educational opportunities/trainings
- 27 Trained Helping Parents available
- 1,700 people in data base
- 252 people attended three networking events
- 6 support groups meet monthly, including Mothers Network, Fathers Network, Adult Caregiver Support Group, SASSIE Autism Group, Mom and Me, and Padres Unidas
- 4 sib shops to 86 siblings



Community Partner

The Arc of Snohomish County
425-258-2459

County Liaison

Tamra Bradford
425-388-7320



Career Path Services

Individualized vocational services based on a Career Path Service Plan designed to support a participant to pursue and/or maintain community employment

Targeted Outcomes:

- Career path planning and development is the basis for determining services.
- Services are individualized for each participant.
- Services are based on individual choices, preferences and support needs.
- All participants are supported to pursue and/or maintain community employment.
- Increases in wages earned and employment benefits received.

Additional Services:

- **Independent Planning Services:** Individualized person-centered planning to develop an individual's personal plan for the future and strategies to implement their career path goal.
- **Transition Resource Coordination:** Assistance to students in high school to make a successful transition from school to adult services and employment.
- **Orientation Services:** Information to individuals who are interested in Career Path Services on ways to navigate the system, understand rights etc.
- **Social Security Benefits Assistance:** Understand how work affects Social Security benefits, how to keep those benefits and explore possible work incentives.

2010 Monthly Average Outcomes

788 people were supported to obtain community employment.
28 people received community access
287 people were supported to maintain employment in the community.
\$1,954,655 Total wages earned by individuals working
community jobs in Snohomish County in 2010

Community Partner

There are 11 qualified service providers in Snohomish County.



County Liaison

Susan Chriest
425-388-7332



Social Security Benefits Assistance Program

**Assist individuals with developmental disabilities
to understand how being employed affects Social Security benefits**

Targeted Outcomes:

- Assists individuals and families in navigating and understanding the Social Security System
- Assist individuals who are employed or interested in working to understand their Social Security benefits.
- Assist individuals in understanding how employment affects Social Security benefits and how work incentives may be used to reach employment goals.
- Assist individuals in developing, maintaining and utilizing Social Security work incentives to help maintain Medicaid or Medicare benefits and retain more cash benefits.
- Educate individuals, families and community agencies on the basics of Social Security and Social Security work incentive programs.
- Utilize Social Security benefits to access potential community resources such as Section 8 housing, food assistance, and Ticket-to-Work.



2010 Outcomes

175 individuals received benefits planning and follow along support

Contact your DDD Case Manager for a referral

425-339-4833



Snohomish County Benefits Planner

Melinda Bocci
425-388-7259



Independent Planning Services

Provide individualized person-centered planning that supports participants with developmental disabilities to develop a personal plan for the future

Targeted Outcomes:

- Provide planning services and support to individuals who want to work, volunteer and participate in their community.
- Focus on individual strengths and develop strategies to connect individuals with resources and supports in the community.
- Build personal networks and circles of support.
- Assist individuals to become respected, contributing members of their community.
- Recruit, train and provide professional oversight to facilitators of individual person-centered planning services.



2010 Outcomes

36 Person Centered Plans were completed by one of four independent planning facilitators.

2 community presentations regarding planning services were provided to schools/community.



**Contact your DDD Case Manager for a Referral
425-339-4833**

Community Partner

Advanced Approach
206-419-1510

County Liaison

Deb Gall
425-388-7476



High School Transition Coordination

**Provide support to adults with developmental disabilities
in their transition from school to adult services and employment**

Targeted Outcomes:

- Provide support to individuals who are 18-21 years-of-age and connected to the State Division of Developmental Disabilities to prepare them for successful transitions from school to adult services and employment.
- Assist individuals and their families to plan for their future and connect to personal and community resources specific to their individual needs.
- Provide support with navigating the service system and understanding what is available to them.
- Assist individuals with their employment goals.
- Provide information and support during transition / IEP meetings.
- Coordinate employment services with Snohomish County, DDD (Division of Developmental Disabilities), DVR (Division of Vocational Rehabilitation) and DSB (Division of Services for the Blind) as funding is available.
- Provide networking opportunities and information to schools through the Snohomish County Transition Council.
- Coordinate the Annual Transition Fair.
- Provide presentations to families, students, school districts or school programs, and/or teachers about planning for adult life after high school.



2010 Outcomes

173 families received individualized transition
planning and support to connect to community resources.
350 community members attended the Annual Transition Fair

County Transition Coordinator

Deb Gall
425-388-7476



Community Advisory Groups

Snohomish County Transition Council

The Transition Council is a collaborative group of educators and community, state and county agencies that meet the first Wednesday of the month during the school year. Melinda Bocci **425-388-7259**

Snohomish County Developmental Disabilities Advisory Board

The DD Advisory Board meeting (open to the public) provides an opportunity for county / community members to receive up-to-date information that impacts individuals with developmental disabilities from state and local perspectives. The Board meets the fourth Tuesday of the month (except July and December). Stuart Torgerson **425-388-7208**



Family Interagency Coordinating Council

A quarterly meeting of families, schools and agencies to coordinate supports and services for children ages birth to six years-of-age. Angie Ahn-Lee **425-388-7114**

Annual Events

Snohomish County Transition Resource Fair (1998 to Present)

The Transition Fair occurs annually during the month of March with over 50 community agencies in attendance and approximately 350 people attending. Classes are offered throughout the event. www.snoco.org (Search Developmental Disabilities) **425-388-7320**



2010 Snohomish County Program Outcomes

Birth to Three Early Intervention Program

- **99%** of children served received services in their **natural environments**.
- An average of **577** children/families received early intervention services each month.

Career Path Services

- **788** people were supported to obtain community employment
- **287** people were supported to maintain employment in the community
- **\$1,954,655** Total wages earned by individuals working in community jobs in Snohomish County in 2010.
- **28** people received community access

High School Transition Coordination

- **173** families received individualized transition planning and support.
- **780** people attended trainings, informational meetings and the Transition Fair.

Independent Planning Services

- **36** Person Family Centered Plans were completed by **4** planning facilitators.

Social Security Benefits Assistance

- **175** individuals received benefits planning.

Leadership and Education

- **18** family members/self-advocates actively participate on Snohomish County boards/committees.
- **5** family members/self-advocates actively participate on Statewide boards/committees
- **33** leadership and advocacy trainings were attended by **389** people.

Connecting Families

- **32** educational opportunities/trainings were provided to **319** individuals.
- **15** parents were connected to a Helping Parent (HP) **27** trained HP available.
- **86** siblings attended sib shops

Building Inclusive Communities/Family Support Centers

- Individuals with developmental disabilities volunteered a total of **129** hours per month at the **8** Family Support Centers.

Information and Education

- **1,100** people attended trainings and educational events
- **7,000** resource books were developed and distributed
- **5,000** Informational brochures were created and distributed

2011 Public Policy Guideline

Snohomish County Developmental Disabilities Citizen Advisory Board

The 2011 Public Policy Guideline for Snohomish County Developmental Disabilities details key issues of concern identified by the Citizen Advisory Board in conjunction with the community at large. This Guideline is to serve as a tool for the County's elected officials and others who work in the public policy arena on issues critical to the County's citizens with developmental disabilities and their families. For more information contact Stuart Torgerson 425-388-7208.

For the 2011 Budget Session of the Washington State Legislature The Board is cognizant of the continuing state budget crisis. Concurrently the Board advises against any further reduction of community services for individuals with developmental disabilities and their families. Washington State is already ranked near the bottom at 37th in the nation in public "fiscal effort" for its citizens with developmental disabilities.⁽¹⁾ Our communities cannot afford any further erosion of the essential community service system.

Hence, the Board strongly recommends the state legislature:

Develop formal policy that recognizes that individuals and families are best served when they are supported in their homes and communities, and provides comprehensive support to families as the primary caregiver.

Comprehensive support to families as the primary caregivers The Board strongly encourages the legislature to develop policy which acknowledges that individuals and families are best served when they are supported in their homes and communities. It is time for critical long range review and action to optimize the distribution of our state's scarce resources. This review needs to address public funding options in our state. We must close the current growing gaps between the "haves" (waiver funded), the "have-nots" (non-waiver funded) and those who receive no basic services at all.

The legislature should establish a formal policy that affirms that individuals should be supported to participate, work and thrive in their home communities. Families, as the primary caregivers, should be supported by adequate services and resources. They should benefit from residing in welcoming, inclusive communities. Without a clear policy and comprehensive approach that addresses individual and family needs from birth through adulthood, the legislature will continue to address services as isolated programs, when in fact these services are interrelated.

The Board urges the legislature to adequately support and invest in families as the long term primary caregivers through a comprehensive, coordinated array of community services and resources as outlined on the next page:

(1) Footnote: Data from The State of the States in Developmental Disabilities by David Braddock, University of Colorado. "Fiscal effort" is a measure of state spending for developmental disability services per \$1,000 of aggregate statewide personal income.

2011 Public Policy Guideline

Family Support Services The Board urges the legislature to recognize and demonstrate support for the broad range of families' needs. All families are different, and it is not uncommon that siblings, grandparents, extended family and others may be in the primary caregiver role. Understanding that families are the primary caregiver for the individuals, family support services become appreciated in a larger context. These include:

- **Affirm and strengthen traditional forms of family support** These include respite, education/training of caregivers, and both in and out of home crisis resource supports. These services are required to meet the new, broader expectations placed on families. This will also assist in avoiding further emergency placements of children in the state's RHCs.
- **An increase in residential support and creative housing options** for families who are expected to provide homes and support young adults after they leave public schools. Options should include access to information, increased resources, more affordability, and better coordination of services. This will enable families and individuals to develop a richer array of opportunities for independent living.

Early Intervention Services Early identification and intervention services are critical. They greatly enhance the developmental growth of the child and increase the quality of life of the individual and family. Early intervention services are cost-effective, saving many times over the initial investment in public funding. The Board urges the legislature to embrace the findings of its own 2008 study, designating base rate funding for each eligible child to ensure the availability of equitable early intervention services across the state.

Coordination of Public Schools and the state's Developmental Disability Services The Board urges the legislature to direct more strategic coordination of the schools and state Developmental Disability services. We must maximize the effectiveness of public funds invested on behalf of individuals with disabilities and their families. The Board urges a stronger alignment of mission and goals between the Office of the Superintendent of Public Instruction (OSPI), the Division of Developmental Disabilities (DSHS/ADSA/DDD), and the Division of Vocational Rehabilitation (DSHS/DVR). This coordination of state public funds will better prepare students and their families for a productive post-school life in the community.

Employment Services for High School Graduates and other Working Age Adults The Board urges the legislature to continue to provide adequate funding to ensure that all eligible students and adults who want to work receive the support they need to secure and retain community employment. Employment is a critical component of a full, productive life, and assists in the stabilization of families.

Community System Stabilization The Board urges the legislature to recognize the value of a skilled, stable community service network. It is essential that the community service provider workforce is compensated fairly for providing quality services and creating a stable, inclusive community environment. The legislature also needs to continue to support information and technical assistance resources. These educate and inform community members of available resources, and increase all individuals and families' capacity to support each other and to address their own unique needs.



Snohomish County Community Profile



There are approximately **704,300** Snohomish County residents.
(April 2009 Census Bureau)

It is estimated **21,129*** Snohomish County residents have a developmental disability. The majorities of these individuals live at home and receive support from their families. (*3% is used by the State DDD/DSHS to determine the segment of general population that may have a developmental disability.)

There are currently **4,623** individuals in Snohomish County connected to the State DSHS Division of Developmental Disabilities (DDD). (State DDD statistics 2/24/2011)

There are currently **3,212** individuals in Snohomish County connected to the State DSHS Division of Developmental Disabilities (DDD) who receive a paid service through DDD (State DDD statistics 2/24/2011)

The **State Division of Developmental Disabilities** contracts with **Snohomish County Developmental Disabilities** to provide the following services to DDD eligible clients.

- Birth to three Early intervention Services
- Career Path Services
- Social Security Benefits Assistance
- Independent Planning Services
- High School Transition Coordination
- Information and Education

Snohomish County Developmental Disabilities receives County millage dollars that are utilized to foster inclusive communities and support individuals with developmental disabilities and their families to fully participate in and contribute to their community. Some of these efforts include:

- Building Inclusive Communities/Family Support Centers
- Leadership and Education
- Connecting Families
- Inclusive Recreation and Leisure Opportunities
- Information and Education

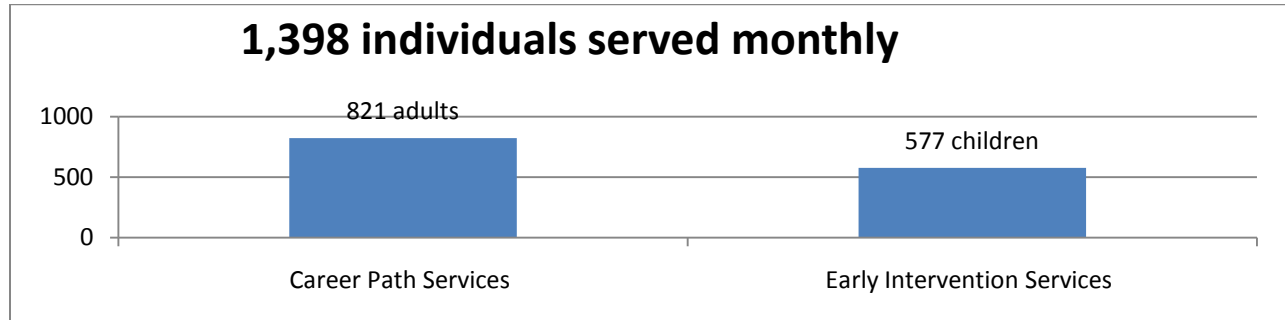


State Contracted Services



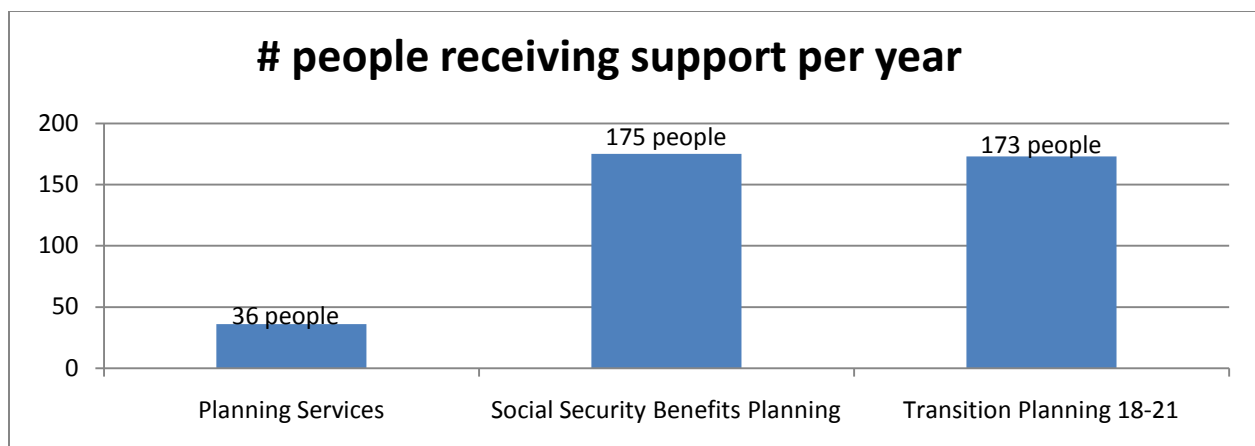
Career Path Services and Early Intervention

Snohomish County Developmental Disabilities contracts with community agencies to provide Career Path Services for adults and early intervention services for children birth to three years of age.



Transition, Social Security Benefits and Person Centered Planning

Snohomish County Developmental Disabilities staff provides Transition Planning and Social Security Benefits planning services. The County contracts with Independent Planners to provide Person Centered Planning.





**Snohomish County
Human Services**

Stuart Torgerson
Developmental Disabilities Coordinator

(425) 388-7208
3000 Rockefeller Avenue M/S 305
Everett, WA 98201-4046

Fellow Citizen of Snohomish County,

Thank you for taking an interest in Snohomish County's mission of fostering inclusive, welcoming communities that will support individuals with developmental disabilities to fully participate and make their own unique contributions.

We believe that dedicated public funding is an essential piece of the solution to addressing gaps in services and support systems. Perhaps the greatest positive change will come from the personal efforts of individuals, families and supportive community members who have good information, access and opportunities to engage and partner with their neighbors, businesses and other community organizations/members.

As you read this book, you discovered that much of our work and effort is focused on strengthening those facets of the community support system that empower individuals and families to take their own action steps and become change agents in their own neighborhoods/town.

I hope the Community Plan along with the other companion resource books (available from our office) are helpful to you in your endeavor to create and participate in welcoming communities in Snohomish County.

If you think something is missing in this document, or have a good idea for moving us closer to our mission, please don't hesitate to contact me or the particular staff member listed in a given section of the book.

Thank you,

Stuart Torgerson
Coordinator, Developmental Disabilities
Snohomish County Human Services Department
425-388-7208
Stuart.torgerson@snoco.org

Message from Snohomish County Coordinator

*“Never doubt that a small group
of thoughtful committed citizens
can change the world;
indeed,
it's the only thing that ever has.”*

Margaret Mead

