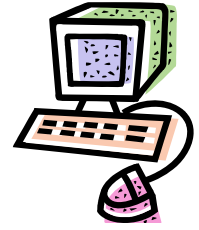




NOTE: Make sure your supervisor approves the e-learning course(s) you want to complete on paid County time.



E-Learning:

What does it mean for Snohomish County employees?

What is E-Learning?

E-Learning is defined as a learning experience delivered by electronic technology. It can be CD ROM based, Network-based, Intranet-based or Internet-based. It is self-paced, hands-on learning.

As a Snohomish County employee you will have access to e-learning via a computer with over 200 courses to choose from. This is a great opportunity for you to learn new skills, boost your current skill level and increase your knowledge on numerous topics.

Benefits of E-learning:

- Courses are accessible on your schedule with your manager's approval
- Online learning does not require physical attendance
- Learning is self-paced (not too slow, not too fast)
- It can lead to increased retention and a stronger grasp on a specific subject
- E-learning provides "Just-in-Time" training (*as you need, not having wait to attend a scheduled class*)
- Ability to view your own student transcripts and print your own certificates for the e-learning courses you complete

Barriers to using E-Learning:

- This form of learning may not be for every learning style or training need
- The content might not be exactly how the County wants it to be presented
- It may not provide the same quality of classroom delivery

Overcoming the Barriers:

- The Continuous Learning Center offers various forms of learning for all learning styles; including classroom, self study, e-learning and more
- If you have any questions about the content presented in an e-learning course, talk with your supervisor or contact Carolyn Calderon in HR at x2070 or by email at carolyn.calderon@snoco.org
- Classroom training is not going away. Several topics can be taken through a blended learning approach - more info coming soon