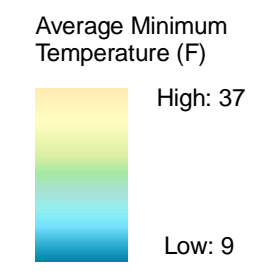


Map 15-3
Average Annual
Minimum Temperature (F)



Average Minimum Temperature is according to a model using point temperature data for the 30-year period of 1971-2000.

USDA/NRCS - National Cartography & Geospatial Center

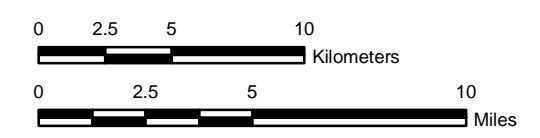


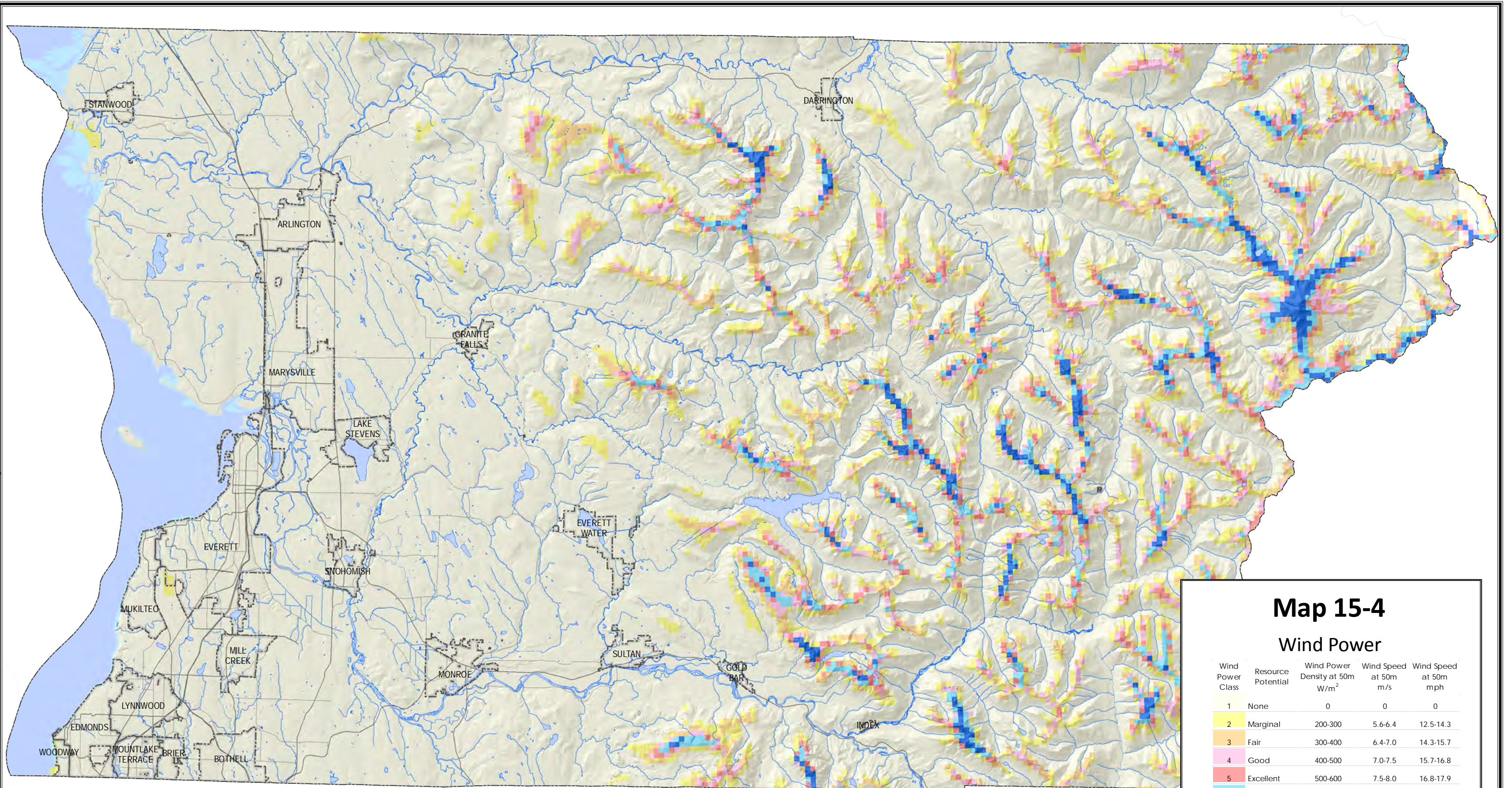
DRAFT

Snohomish County disclaims any warranty of merchantability or warranty of fitness for any particular purpose of this map, either express or implied. Snohomish County makes no representation or warranty concerning the content, accuracy, currency, completeness, or quality of data depicted on this map. Any user of this map assumes all responsibility for its interpretation and use. Any user relying on any of the County's GIS products does so at his or her own risk. All critical information should be independently verified. Snohomish County shall not be liable to the user for damages of any kind, including lost profits, lost savings, or any other incidental or consequential damages related to the providing of data or its use. The user agrees to hold Snohomish County harmless from and against any damage, loss, or liability arising from any use of this map.

Tetra Tech, Inc.
 May 2010

Data Sources:
 Snohomish County
 Washington State Department of Natural Resources
 Division of Geology and Earth Resources
 USDA/NRCS - National Cartography & Geospatial Center





Map 15-4

Wind Power

Wind Power Class	Resource Potential	Wind Power Density at 50m W/m ²	Wind Speed at 50m m/s	Wind Speed at 50m mph
1	None	0	0	0
2	Marginal	200-300	5.6-6.4	12.5-14.3
3	Fair	300-400	6.4-7.0	14.3-15.7
4	Good	400-500	7.0-7.5	15.7-16.8
5	Excellent	500-600	7.5-8.0	16.8-17.9
6	Outstanding	600-800	8.0-8.8	17.9-19.7
7	Superb	>800	>8.8	>19.7

This data was developed by the National Renewable Energy Laboratory (NREL), which is operated by the Alliance for Sustainable Energy, LLC for the U.S. Department of Energy (DOE). Wind power resource estimates were produced by TrueWind Solutions using their MesoMap system and historical weather data under contract to Wind Powering America/NREL. This data has been validated with available surface data by NREL and wind energy meteorological consultants. US Department of Energy and National Renewable Energy Laboratory



Snohomish County

DRAFT

Snohomish County disclaims any warranty of merchantability or warranty of fitness for any particular purpose of this map, either express or implied. Snohomish County makes no representation or warranty concerning the content, accuracy, currency, completeness, or quality of data depicted on this map. Any user of this map assumes all responsibility for its interpretation and use. Any user relying on any of the County's GIS products does so at his or her own risk. All critical information should be independently verified. Snohomish County shall not be liable to the user for damages of any kind, including lost profits, lost savings, or any other incidental or consequential damages related to the providing of data or its use. The user agrees to hold Snohomish County harmless from and against any damage, loss, or liability arising from any use of this map.

Tetra Tech, Inc.
May 2010
Data Sources:
Snohomish County
Source: US Department of Energy and National Renewable Energy Laboratory
US Geological Survey
Washington State Department of Natural Resources
Division of Geology and Earth Resources

0 2.5 5 10
Kilometers

0 2.5 5 10
Miles

