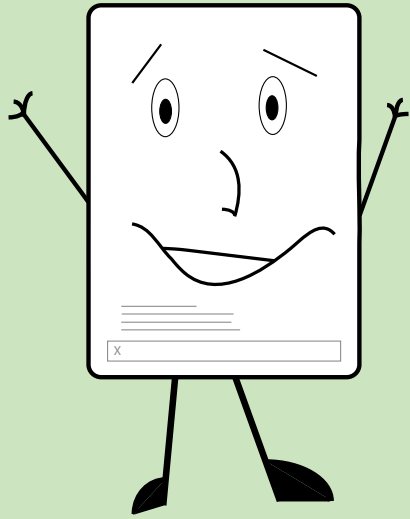


1 Register to Vote



You must be:

- A United States Citizen; and
- 18 Years Old (or older); and
- A resident of Washington State.

You must not be:

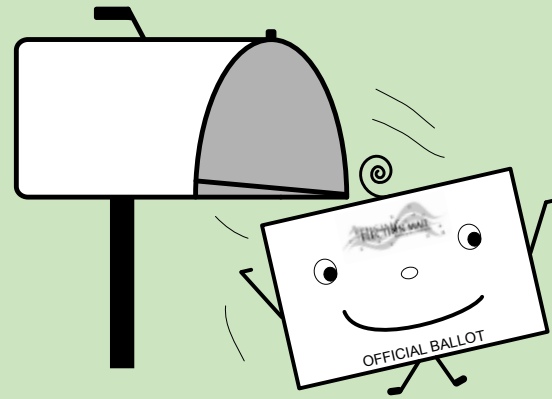
- Currently denied the right to vote due to felony conviction or court order.

Register:

- Online at www.vote.wa.gov or
- By completing a registration form available at many government offices, libraries and schools

If you move or change your name, you are responsible for updating your information.

2 Receive your Ballot

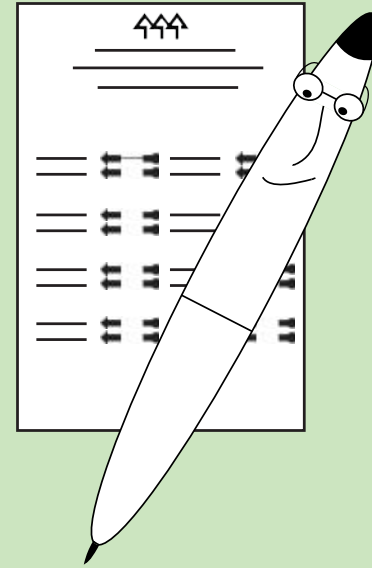


Snohomish County votes entirely by mail. Your ballot will arrive 2 weeks before the election.

If you have not received your ballot by 10 days before the election, please contact Snohomish County Elections at 425 388-3444.

You may check your registration online to ensure that you are registered at your current address at www.vote.wa.gov.

3 Mark your Votes

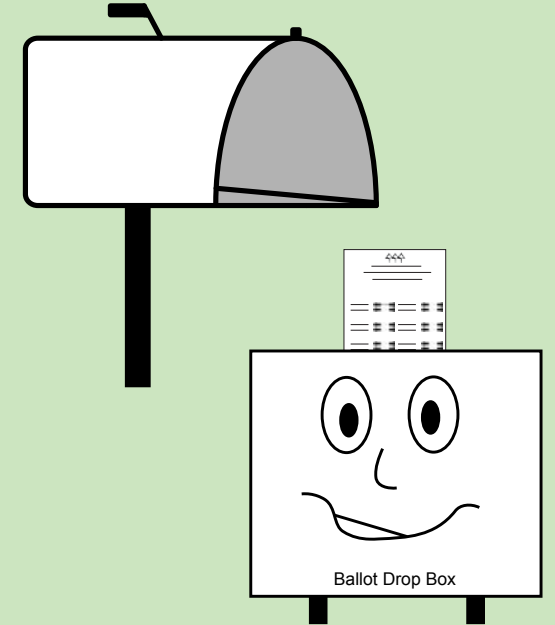


Make sure you carefully read all the instructions that come with your ballot.

Important steps to remember:

- Mark your choice by making a single, solid line to complete the arrow.
- If you need to make a correction, follow the instructions for correcting a vote.
- Sign your return envelope.

4 Return your Ballot



Your ballot must be returned or post-marked by Election Day.

For your convenience, you may use any one of the many Community Collection Centers to return your ballot without postage.

Community Collection Center hours and locations can be found on the Snohomish County Elections website. www.snoco.org - enter the word "vote" into the search box.

Welcome to voting in Snohomish County.

You are the most important part of making sure the freedoms we enjoy in the United States continue. By participating in the voting process, you help pick the people who will lead at local, state and national levels. You help determine the ideas that shape our future.

This guide provides a quick overview of your participation in the voting process. It takes you through the four steps of 1) register to vote; 2) receive your ballot; 3) mark your votes; and 4) return your ballot.

Once you choose to participate, be sure to follow the voting instructions carefully. Seek out answers to any questions you may have.

Snohomish County Elections is available to assist you in the voting process. Our complete contact information is listed on the back of this guide.

Make the choice to make a difference. Choose to register and vote.



Carolyn Weikel
Snohomish County Auditor



Snohomish County Elections
3000 Rockefeller Ave M/S 505
Everett, WA 98201

(425) 388-3444

www.snoco.org/Departments/Auditor

Office Hours:
Monday – Friday
9:00 a.m. – 5:00 p.m.

Updated 12/09



A Quick Guide To Voting In Snohomish County

