

Pilot Project 9: Swale Revegetation

Focus Area F



Project Description

- Remove grass in roadside ditch and replace hard-packed soil with more porous soil
- Add organic materials to upper soil layers and spread mulch on top
- Plant surface with low-growing, deep-rooted perennial plants
- Install interpretive sign for educational purposes

Benefits

This project will help to:

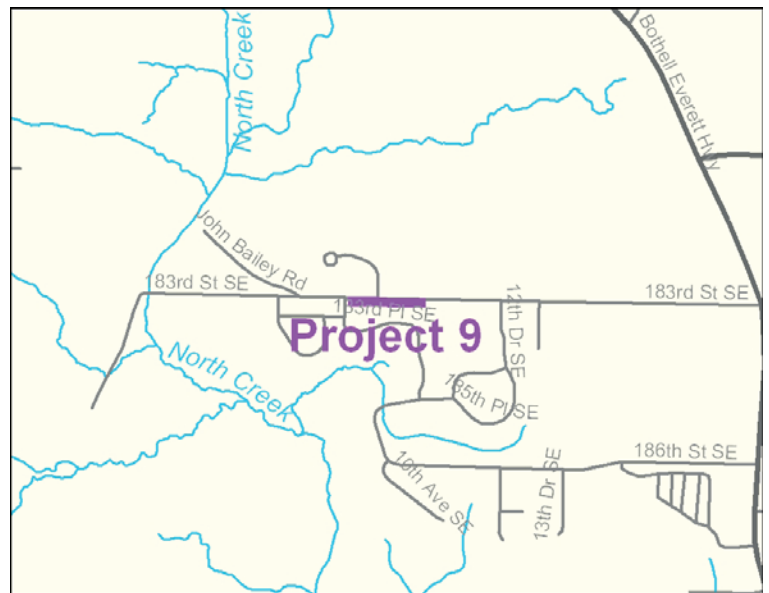
- Reduce stormwater runoff
- Remove pollutants from stormwater
- Recharge groundwater
- Improve neighborhood aesthetics

Location

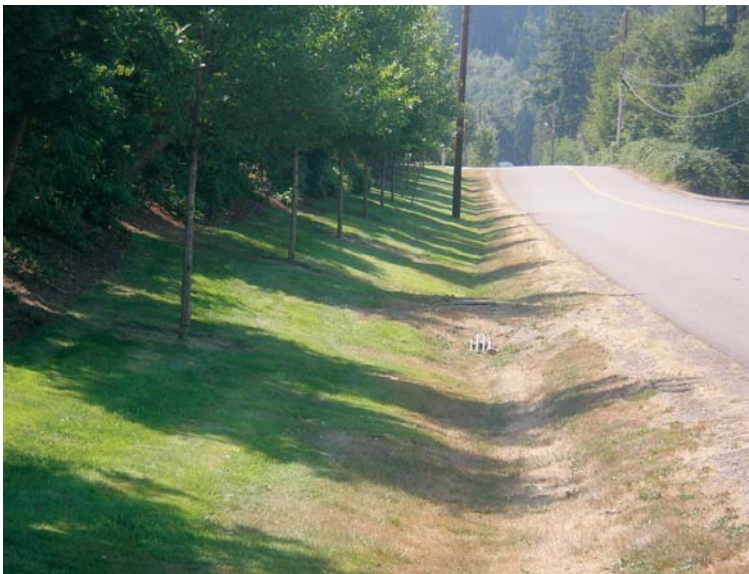
Along 183rd St. SE, across from North Creek Regional Park

Estimated Project Cost

\$174,000



Existing Project Site



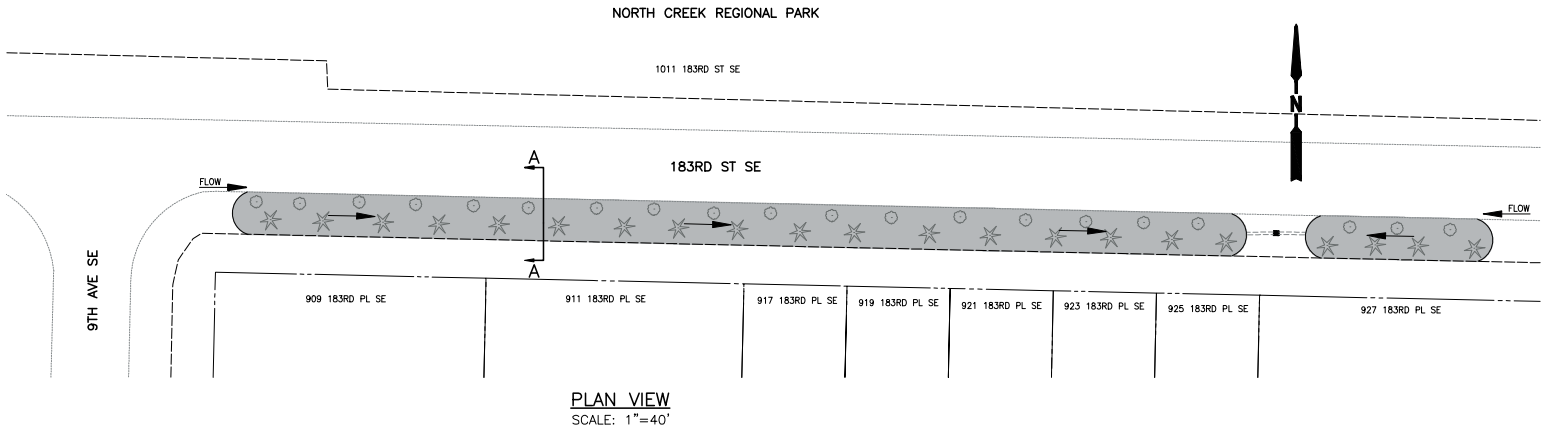
Example of Improvements Proposed



Vegetation planted in swale to filter out pollutants

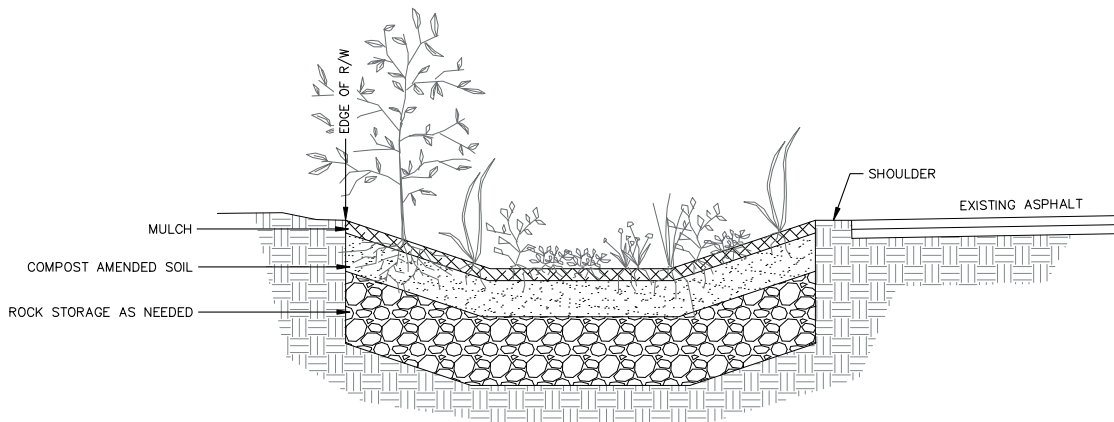
Sketch 1 – View of Proposed Project from Above

The roadside ditch in the shaded area will be replaced with a swale containing amended soils and vegetation. Stormwater will flow off the road, enter the swale, and soak into the ground.



Sketch 2 - View of Proposed Project from the Side

The soils and plants in the swale will absorb stormwater and act as a filter to help remove pollutants from the stormwater. This will better mimic conditions that existed before development.



SECTION A
N.T.S.